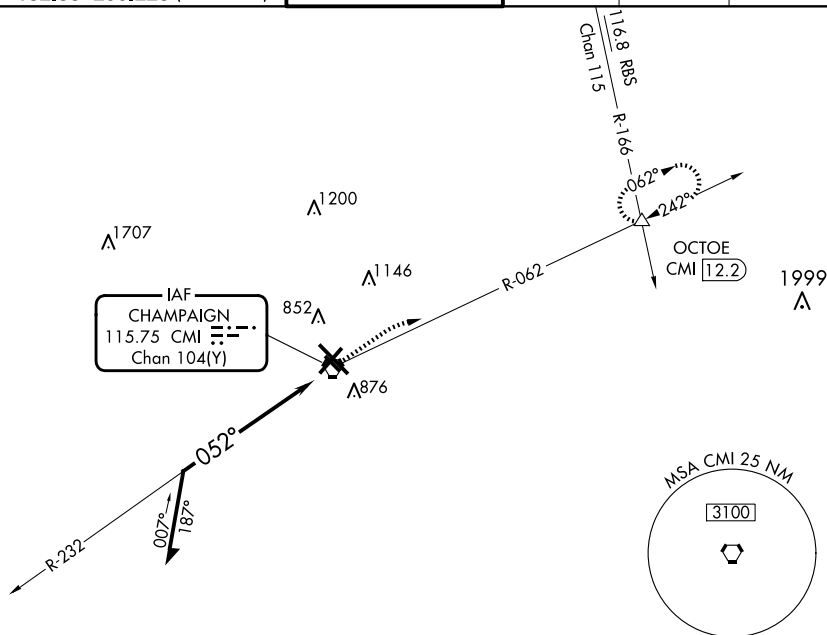


VOR RWY 4
UNIVERSITY OF ILLINOIS/WILLARD (CMI)

MISSED APPROACH: Climb to 2000 then climbing right turn to 2700 on CMI VORTAC R-062 to OCTOE INT/CMI 12.2 DME and hold.

ATIS 124.85	CHAMPAIGN APP CON ★ 121.35 285.65 (319°-138°) 132.85 290.225 (139°-318°)	CHAMPAIGN TOWER ★ 120.4 (CTAF) 0 229.4	GND CON 121.8	CLNC DEL 128.75	UNICOM 122.95
-----------------------	--	--	-------------------------	---------------------------	-------------------------



EC-3, 10 JUL 2025 to 07 AUG 2025

