


VOR RWY 22
UNIVERSITY OF ILLINOIS/WILLARD (CMI)

 ASR	Rwy 22 helicopter visibility reduction below $\frac{3}{4}$ SM NA.
-----------------------------------------------------------------------------------------	-------------------------------------------------------------------

MISSED APPROACH: Climb to 2800 then right turn on heading 340° and on CMI VORTAC R-297 to LODGE INT/CMI 13.2 DME and hold.

ATIS 124.85	CHAMPAIGN APP CON ★ 121.35 285.65 (319°-138°) 132.85 290.225 (139°-318°)	CHAMPAIGN TOWER ★ 120.4 (CTAF) 0 229.4	GND CON 121.8	CLNC DEL 128.75	UNICOM 122.95
----------------	--------------------------------------------------------------------------------	-------------------------------------------	------------------	--------------------	------------------

Procedure NA for arrivals at RBS VOR/DME on V191 northeast bound.

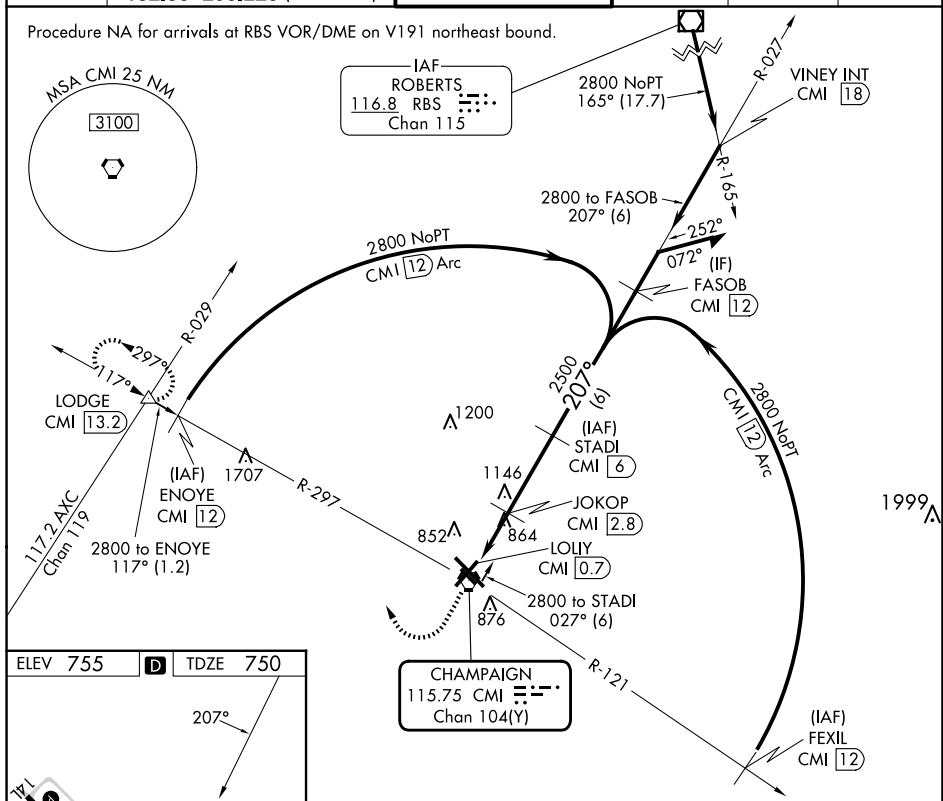


Diagram illustrating the HIRL Rwy 14L-32R and MRL Rwy 4-22 and 14R-32L. The diagram shows the runway layout with various navigation aids and distances. Key features include:

- HIRL Rwy 14L-32R (1.50 NM)
- MRL Rwy 4-22 (1.1 NM)
- MRL Rwy 14R-32L (1.50 NM)
- TWR 825
- Navigation aids: CMI R-297, LODGE, STADI CMI 6, CMI VORTAC, CMI 0.7, CMI 1.7, CMI 2.8
- Distances: 1460, 2500, 2800, 1.1 NM, 3.2 NM, 3.04' TCH 41'