

WAAS CH 61110 W32A	APP CRS 319°	Rwy Idg TDZE 750 Apt Elev 755	8101
--	------------------------	---	-------------

RNAV (GPS) RWY 32R

UNIVERSITY OF ILLINOIS/WILLARD (CMI)

⚠

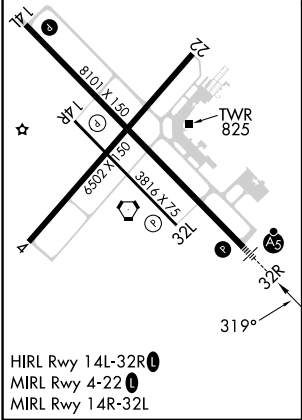
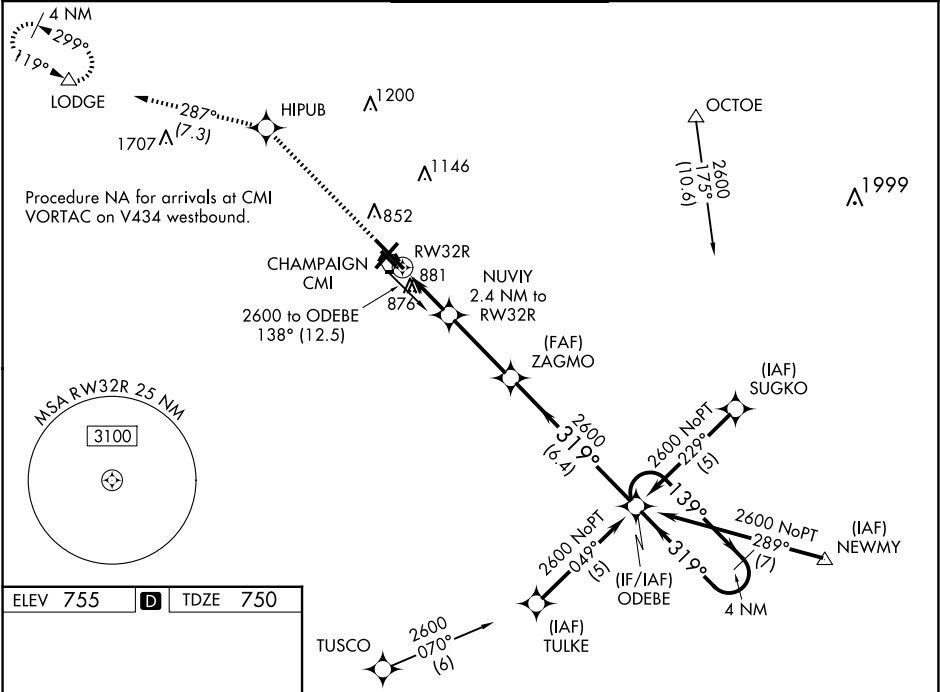
For uncompensated Baro-VNAV systems, LNAV/VNAV NA below -1° C (-2° F) or above 54° C (130° F). DME/DME RNP-0.3 NA. Baro-VNAV and VDP NA when using Rantoul altimeter setting. When local altimeter setting not received, use Rantoul altimeter setting and increase all DA 41 feet, all MDA 60 feet; increase LNAV Cat C/D visibility to RVR 5500. For inoperative MALSR, when using local or Rantoul altimeter setting, increase LNAV Cat C/D visibility to 1½ miles.

MALSR

MISSED APPROACH:

Climb to 2800 direct HIPUB and on track 287° to LODGE and hold.

ATIS 124.85	CHAMPAIGN APP CON ★ 121.35 285.65 (319°-138°) 132.85 290.225 (139°-318°)	CHAMPAIGN TOWER ★ 120.4 (CTAF) 0 229.4	GND CON 121.8	CLNC DEL 128.75	UNICOM 122.95
-----------------------	--	---	-------------------------	---------------------------	-------------------------



2800	HIPUB	tr 287°	LODGE				
* LNAV only		NUVIY 2.4 NM to RW32R	4 NM Holding Pattern				
* 1 NM to RW32R		* 1560		319°		139°	
RW32R		2600		2600		2600	
1 NM		1.4 NM		3.2 NM		6.4 NM	
CATEGORY	A		B		C		D
LPV DA			1000/24		250 (300-½)		
LNAV/VNAV DA			1159/50		409 (500-1)		
LNAV MDA	1200/24		450 (500-½)		1200/45		450 (500-¾)
C CIRCLING	1240-1		485 (500-1)		1500-2¼		1500-2½
				745 (800-2¼)		745 (800-2½)	