

VOR/DME OWB	APP CRS	Rwy Idg	8000
108.65	176°	TDZE	407
Chan 23 (Y)		Apt Elev	407

VOR RWY 18

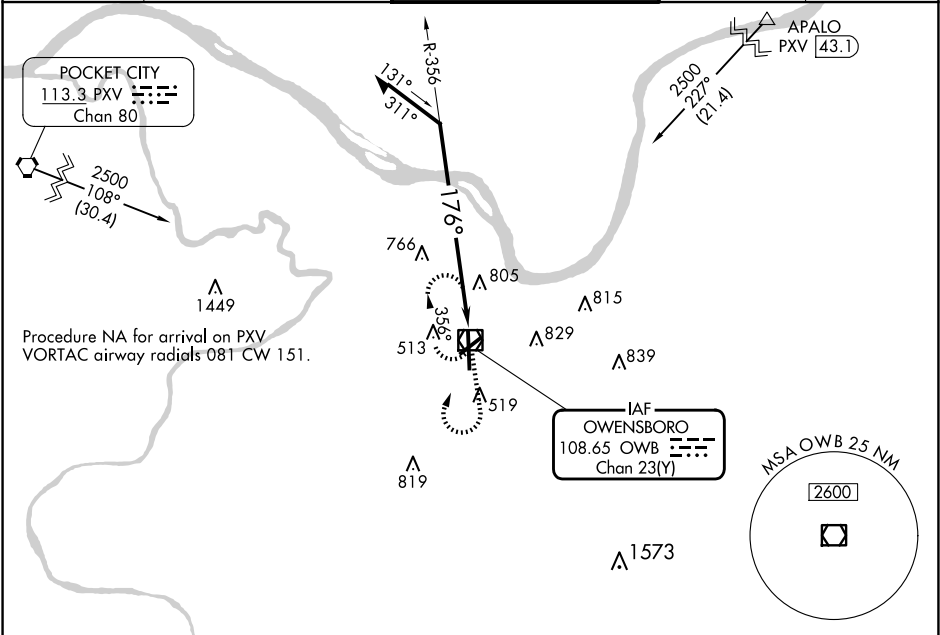
OWENSBORO/DAVIESS COUNTY RGNL (OWB)

T

A

MISSED APPROACH: Climb to 2500 then right turn direct OWB VOR/DME and hold.

AWOS-3PT	EVANSVILLE APP CON *	OWENSBORO TOWER *	GND CON	UNICOM
119.025	124.025 290.9	120.7 (CTAF) 251.15	121.7	122.95



ELEV 407 TDZE 407

176°

TWR 486 466

8L 8000 X 150 5000 X 100 36

36

MIRL Rwy 6-24
HIRL Rwy 18-36
REIL Rwy 6, 18, and 24

Remain within 10 NM

OWB VOR/DME

2500

356°

176°

OWB 2.4

2.1 NM

CATEGORY	A	B	C	D
S-18	1120-1	713 (800-1)	1120-2	713 (800-2)
CIRCLING	1120-1	713 (800-1)	1140-2 733 (800-2)	1140-2 1/4 733 (800-2 1/4)