

WAAS CH <b>40430</b> <b>W06A</b>	APP CRS <b>056°</b>	Rwy Idg <b>5000</b> TDZE <b>405</b> Apt Elev <b>407</b>
--	------------------------	---

## RNAV (GPS) RWY 6

OWENSBORO/DAVIESS COUNTY RGNL (OWB)

For uncompensated Baro-VNAV systems, LNAV/VNAV NA below -1.5°C (5°F) or above 54°C (130°F), DME/DAE RNP-0.3 NA, Rwy 6 helicopter visibility reduction below ¼ SM NA. When local altimeter setting not received, use Evansville altimeter setting: increase LPV DA to 719 feet and all Cats visibility ½ mile; increase LNAV/VNAV DA to 734 feet and all Cats visibility ¼ mile; increase all MDA 60 feet and LNAV Cats C/D and Circling Cats C/D visibility ¼ mile. Baro-VNAV and VDP NA when using Evansville altimeter setting.

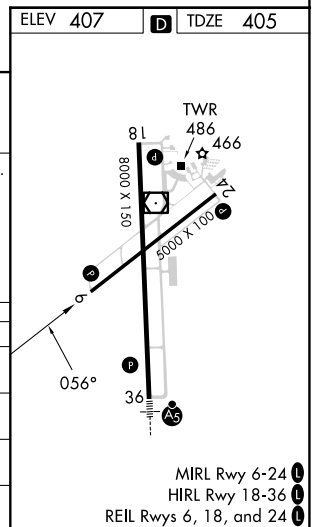
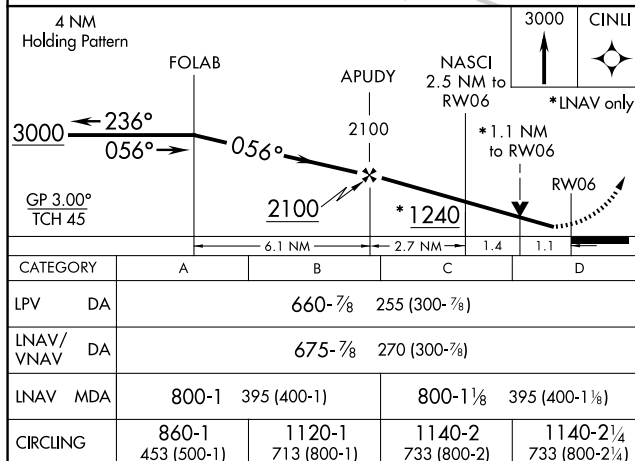
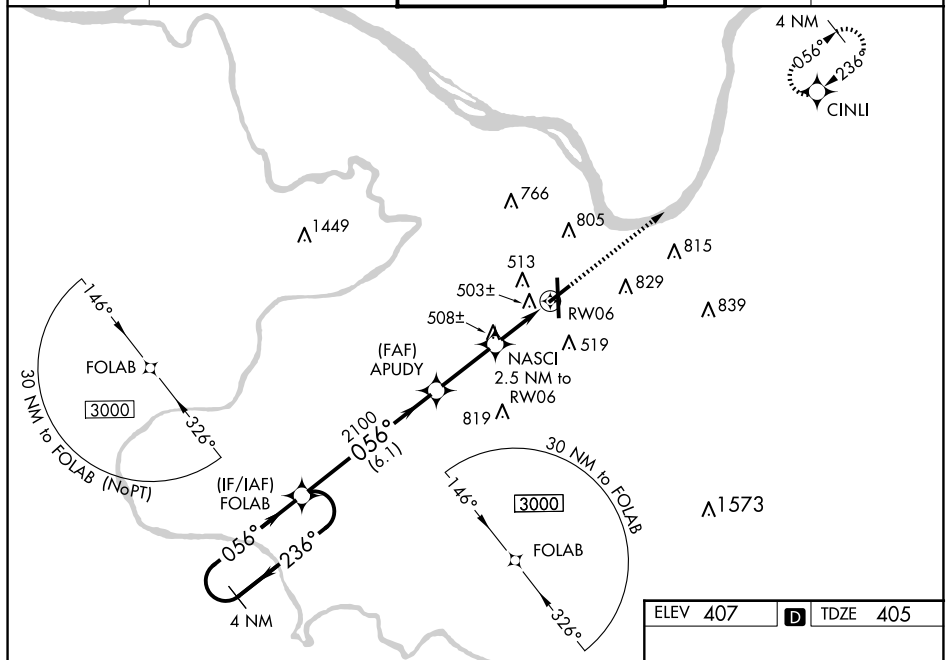
**MISSED APPROACH:**  
Climb to 3000 direct  
CINL and hold.

AWOS-3PT  
119.025

EVANSVILLE APP CON ★  
124 025 290 9

OWENSBORO TOWER ★  
120.7 (CTAF) **L** 251.15

GND CON  
121 7

UNICOM  
122 95

OWENSBORO, KENTUCKY

Amdt 1B 25MAR21

OWENSBORO/DAVIESS COUNTY RGNL (OWB)

37°44'N-87°10'W

RNAV (GPS) RWY 6

SE-1, 10 JUL 2025 to 07 AUG 2025

SE-1, 10 JUL 2025 to 07 AUG 2025