

| | | | |
|--|------------------------|-----------------------------|---|
| WAAS CH 45508 W36A | APP CRS 002° | Rwy Idg TDZE Apt Elev | 8000 401 407 |
|--|------------------------|-----------------------------|---|

RNAV (GPS) RWY 36

OWENSBORO/DAVIESS COUNTY RGNL (OWB)

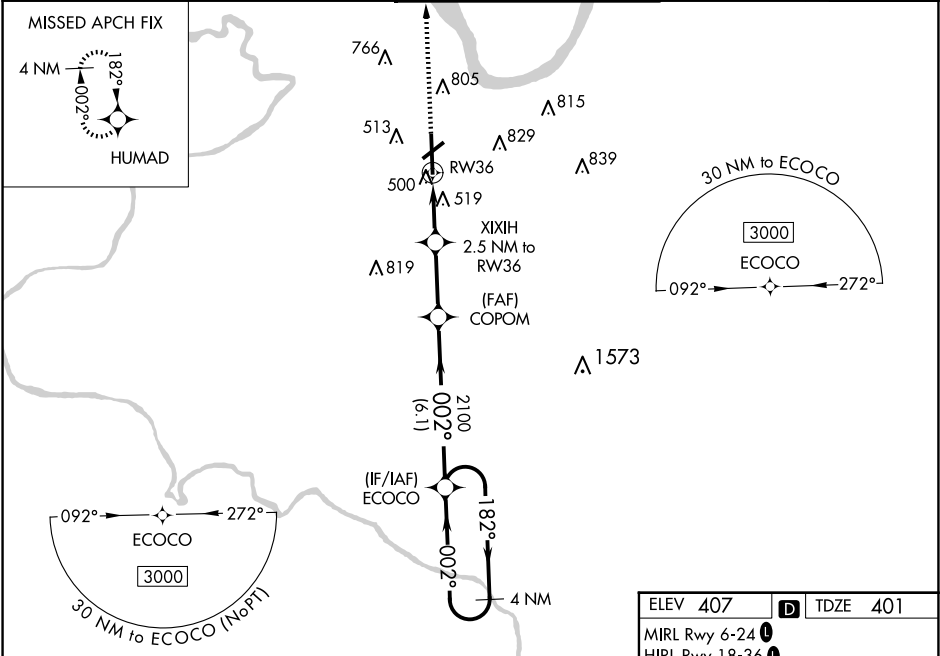
⚠ For uncompensated Baro-VNAV systems, LNAV/VNAV NA below -15°C (5°F) or above 54°C (130°F). DME/DME RNP-0.3 NA. Baro-VNAV and VDP NA when using Evansville altimeter setting. When local altimeter setting not received, use Evansville altimeter setting: increase LPV DA to 656 feet; increase LNAV/VNAV DA to 720 feet and all Cats visibility 1/8 mile; increase all MDA 60 feet and LNAV Cats C/D and Circling Cats C/D visibility 1/4 mile.

MALSR

MISSED APPROACH:

Climb to 3000 direct HUMAD and hold.

| | | | | |
|----------------------------|--|---|-------------------------|-------------------------|
| AWOS-3PT 119.025 | EVANSVILLE APP CON ★ 124.025 290.9 | OWENSBORO TOWER ★ 120.7 (CTAF) 0 251.15 | GND CON 121.7 | UNICOM 122.95 |
|----------------------------|--|---|-------------------------|-------------------------|



4 NM Holding Pattern

ECOCO

COPOM

XIXIH 2.5 NM to RW36

3000

HUMAD

GP 3.00° TCH 56

*1240

*1 NM to RW36

RW36

*LNAV only.

| | | | | |
|--------------|-----------------------|-----------------------|--------------------|----------------------------|
| CATEGORY | A | B | C | D |
| LPV DA | 601-1/2 200 (200-1/2) | | | |
| LNAV/VNAV DA | 665-1/2 264 (300-1/2) | | | |
| LNAV MDA | 780-1/2 379 (400-1/2) | 780-5/8 379 (400-5/8) | | |
| CIRCLING | 860-1 453 (500-1) | 1120-1 713 (800-1) | 1140-2 733 (800-2) | 1140-2 1/4 733 (800-2 1/4) |

ELEV 407

D

TDZE 401

MIRL Rwy 6-24

HIRL Rwy 18-36

REIL Rws 6, 18, and 24