

LOC I-OWB	APP CRS	Rwy Idg	8000
<u>111.5</u>	002°	TDZE	401
		Apt Elev	407

ILS or LOC RWY 36

OWENSBORO/DAVISS COUNTY RGNL (OWB)

DME required.

**T
A**

DME from OWB VOR/DME. Simultaneous reception of I-OWB and OWB DME required.

MALSR



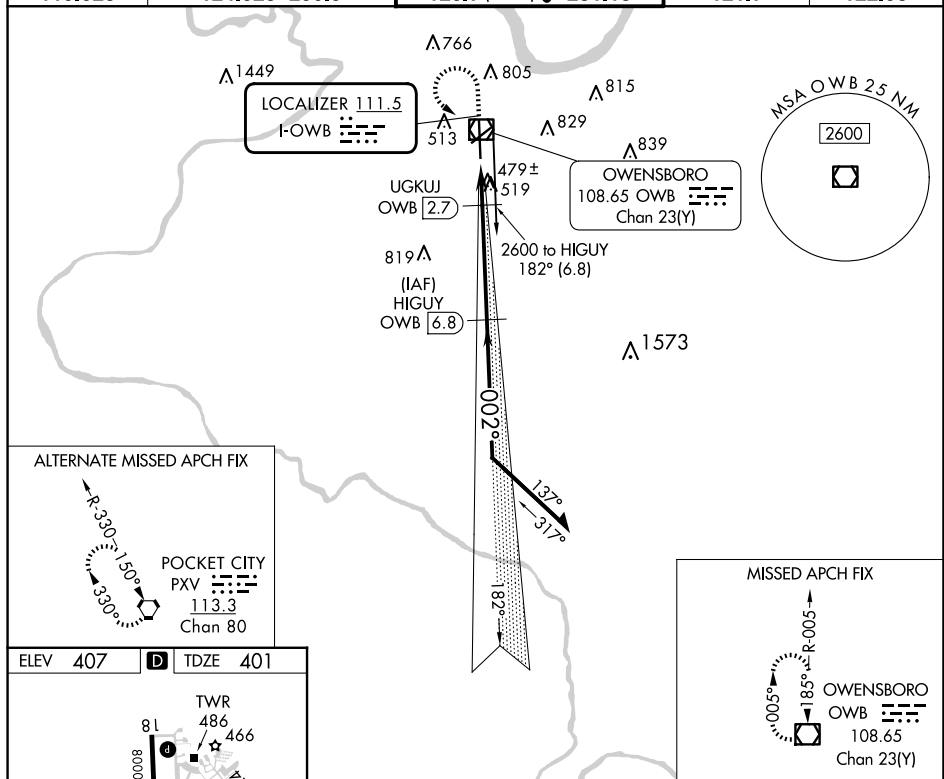
MISSED APPROACH: Climb to 2000 then climbing left turn to 2500 direct OWB VOR/DME and hold, continue climb-in-hold to 2500.

AWOS-3PT
119.025

EVANSVILLE APP CON ★
124.025 290.9

OWENSBORO TOWER★
120.7 (CTAF) **L** 251.15

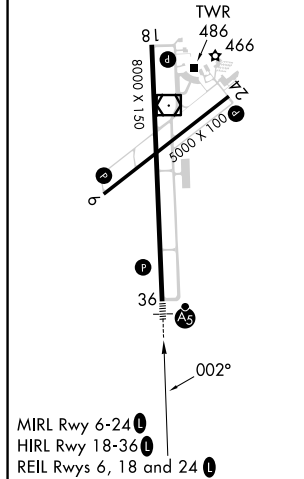
GND CON
121.7

UNICOM
122.95

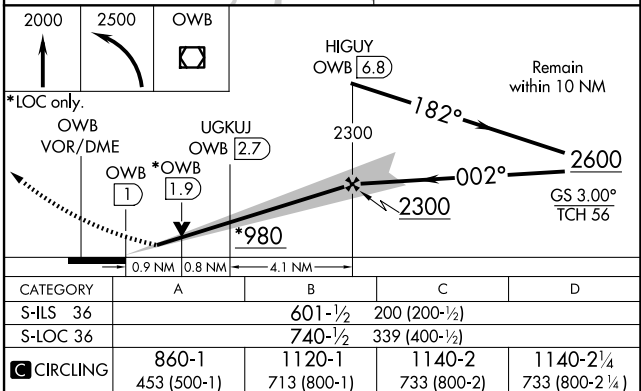
SE-1, 10 JUL 2025 to 07 AUG 2025

ELEV	407	D	TDZE	401
------	-----	----------	------	-----

Page 10 of 10



OWENSBORO, KENTUCKY
Amdt 14 26MAR20



OWENSBORO/DAVISS COUNTY RGNL (OWB)

ILS or LOC RWY 36