

LOC I-HKY	APP CRS	Rwy Ldg	6401
108.7	241°	TDZE	1190
		Apt Elev	1190

ILS or LOC RWY 24


HICKORY RGNL (HKY)

▼

▲

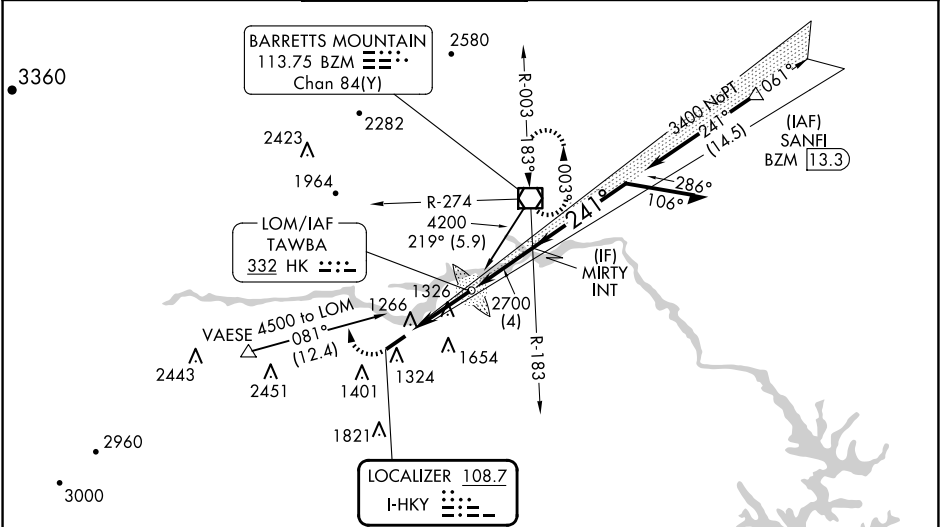
For inop ALS, increase S-LOC 24 Cat C and D visibility ⅓ SM.

MALSR



MISSED APPROACH: Climb to 1700 then climbing right turn to 4000 on heading 340° and on BZM VOR/DME R-274 to BZM VOR/DME and hold.

ASOS	ATLANTA CENTER	HICKORY TOWER ★	GND CON	CLNC DEL	CLNC DEL
118.325	125.15 263.0	128.15 (CTAF) 0	121.7	121.7	124.25 (When twr closed)




ELEV 1190

D

TDZE 1190

ALTERNATE MISSED APCH FIX



TAWBA HK 332

1700

4000

BZM

R-274

BZM

0.8% UP

6401 X 150

TWR

241°

061°

MSA HK 25 NM

5800

HIRL Rwy 6-24 0

REIL Rwy 6

FAF to MAP 4.4 NM

Knots

60

90

120

150

180

Min:Sec

4:24

2:56

2:12

1:46

1:28

CIRCLING

1640-1

450 (500-1)

1660-1

470 (500-1)

2020-2½

830 (900-2½)

2040-2¾

850 (900-2¾)

1700

4000

BZM

R-274

BZM

061°

241°

3400

3400

2700

GS 3.00°

TCH 53

CATEGORY

A

B

C

D

S-ILS 24

1390-½

200 (200-½)

S-LOC 24

1580-½

390 (400-½)

1580-⅝

390 (400-⅝)