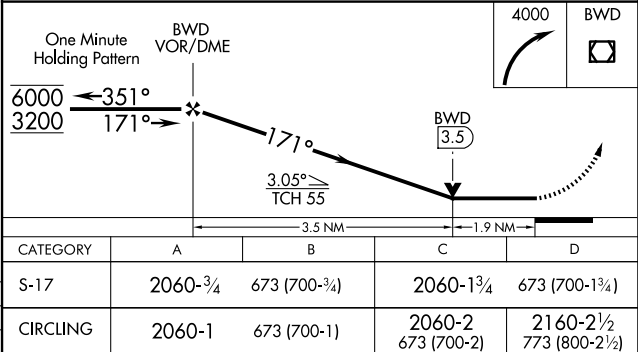
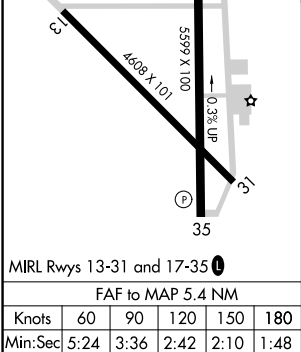
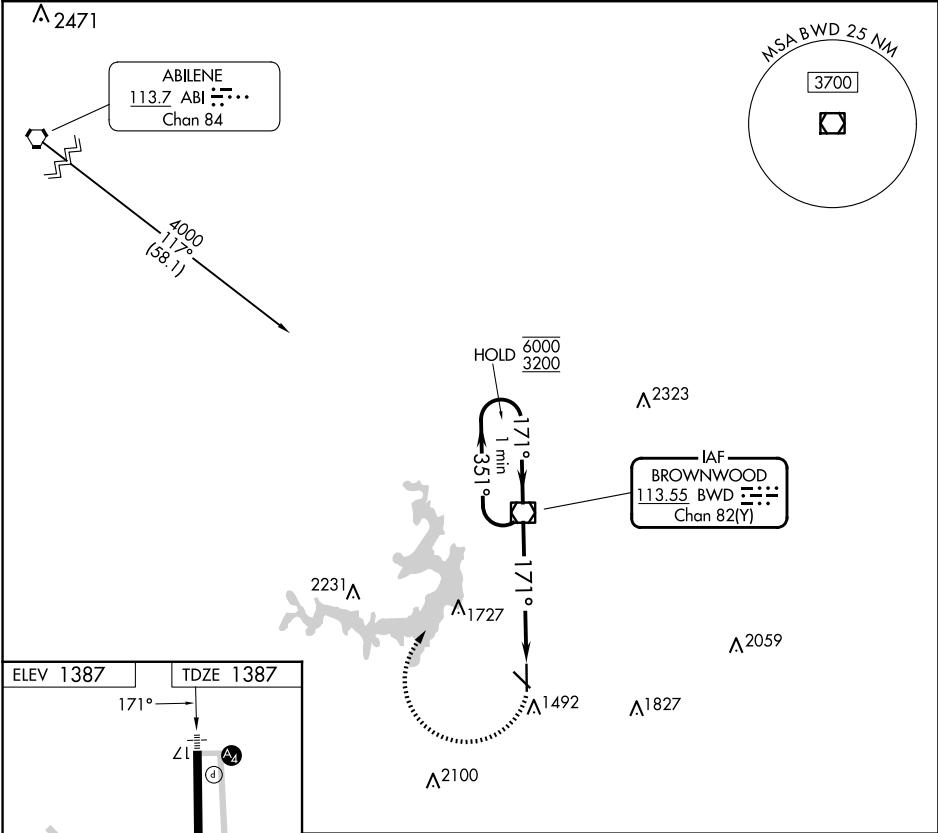


VOR/DME BWD	APP CRS	Rwy Ldg
113.55	171°	5599
Chan 82(Y)		TDZE 1387
		Apt Elev 1387

VOR RWY 17
BROWNWOOD RGNL (BWD)

<div><div></div><div></div></div> <div>Rwy 17 helicopter visibility reduction below 3/4 SM NA. For inop ALS, increase S-17 Cat C and D visibility to 1 7/8 SM.</div>	<div>MALS</div> <div><div></div><div></div></div>	MISSED APPROACH: Climbing right turn to 4000 direct BWD VOR/DME and hold, continue climb-in-hold to 4000.
--	---	---

AWOS-3 118.325	FORT WORTH CENTER 127.45 290.3	UNICOM 122.8 (CTAF)
-------------------	-----------------------------------	------------------------



SC-3, 10 JUL 2025 to 07 AUG 2025

SC-3, 10 JUL 2025 to 07 AUG 2025