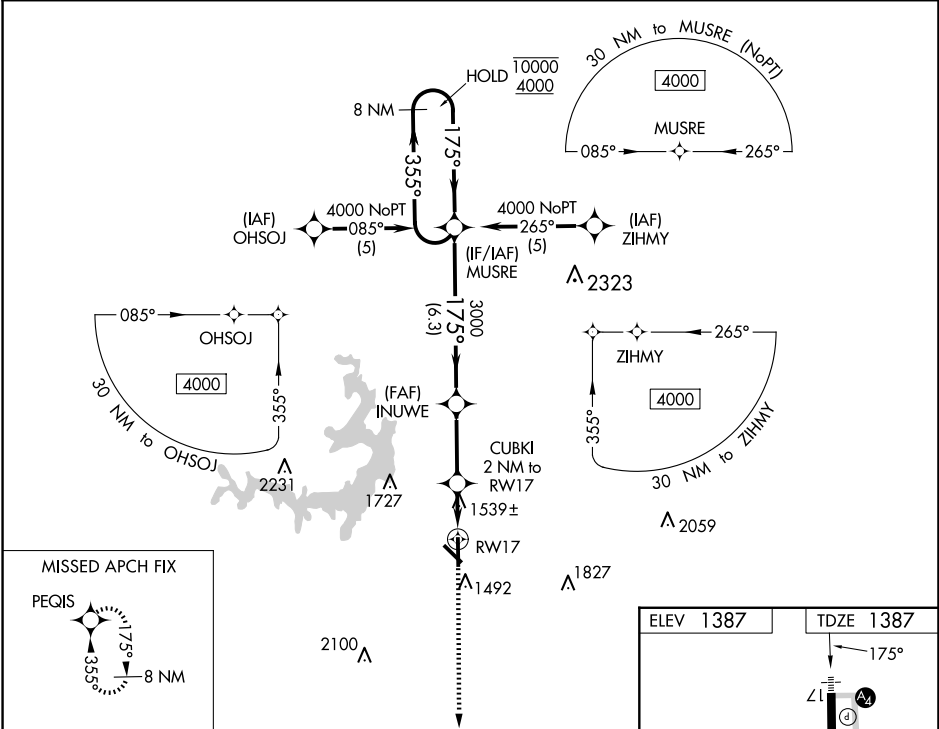


WAAS CH 70325 W17A	APP CRS 175°	Rwy Idg TDZE 1387 Apt Elev 1387	5599 1387 1387
--	------------------------	---	---

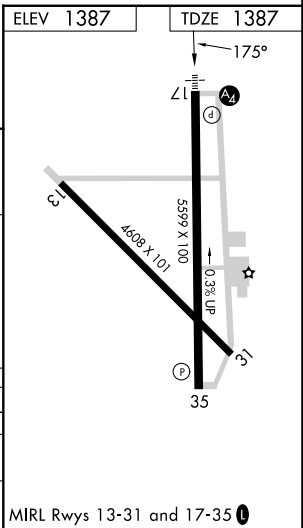
RNAV (GPS) RWY 17
BROWNWOOD RGNL (BWD)

RNP APCH - GPS.	MALS	MISSED APPROACH: Climb to 4000 direct PEGIS and hold.
Rwy 17 helicopter visibility reduction below 3/4 SM NA. For inop ALS, increase LNAV Cats C and D visibility to 1 1/2 SM. Inop table does not apply to LPV all Cats.		

AWOS-3 118.325	FORT WORTH CENTER 127.45 290.3	UNICOM 122.8(CTAF)
--------------------------	--	------------------------------



8 NM Holding Pattern				
MUSRE				
10000 ← 355° 4000 → 175°				
GP 3.00° TCH 52				
3000				
2060				
1.1 NM to RW17				
6.3 NM				
2.8 NM				
0.9				
1.1				
CATEGORY	A	B	C	D
LPV DA	1637-3/4			
LNAV MDA	1800-3/4	413 (500-3/4)	1800-1	413 (500-1)
CIRCLING	1820-1 433 (500-1)	1840-1 453 (500-1)	2040-1 1/4 653 (700-1 1/4)	2160-2 1/2 773 (800-2 1/2)



SC-3, 10 JUL 2025 to 07 AUG 2025

SC-3, 10 JUL 2025 to 07 AUG 2025