

BROWNWOOD, TEXAS

AL-705 (FAA)

25191

LOC I-BWD <u>109.1</u>	APP CRS 175°	Rwy Ldg TDZE Apt Elev	5599 1387 1387
----------------------------------	------------------------	-----------------------------	-------------------------------------------

LOC RWY 17
BROWNWOOD RGNL (BWD)

DME required. RADAR required for procedure entry at KIMRR.

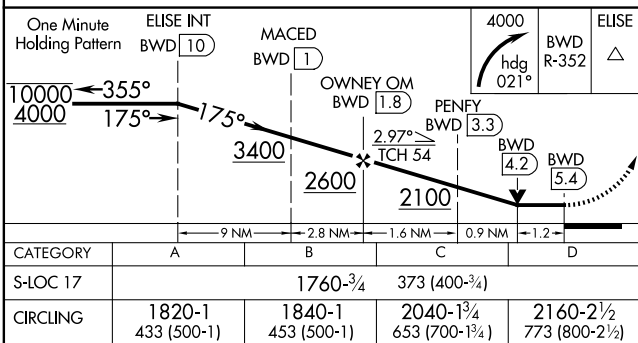
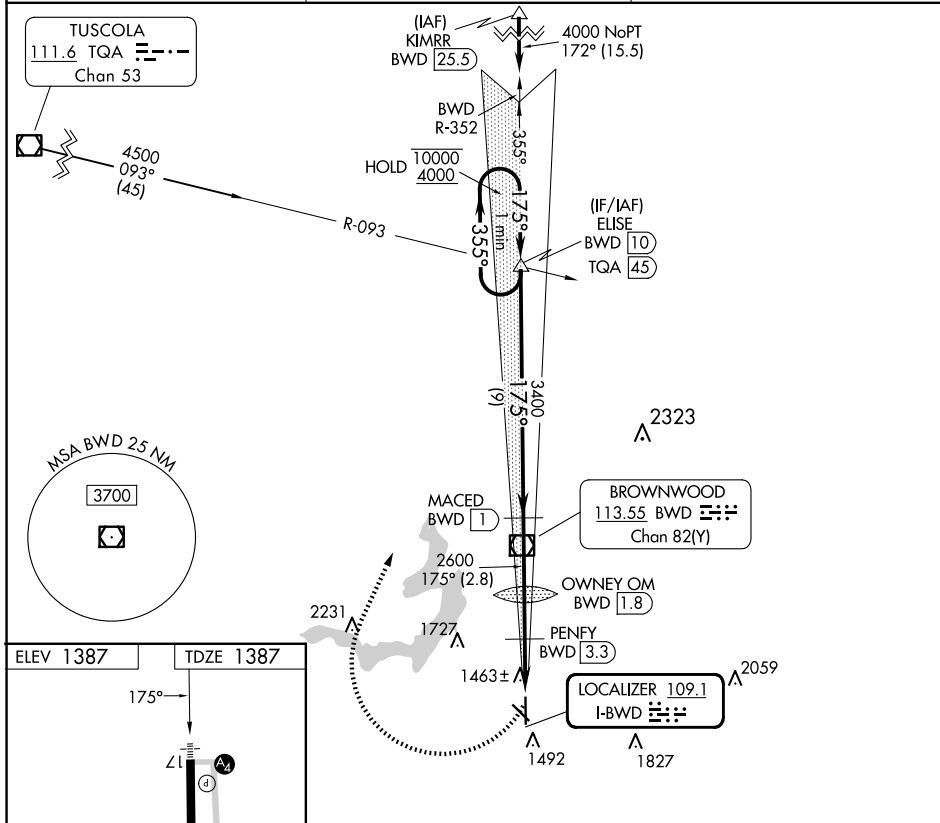
T Rwy 17 helicopter visibility reduction below $\frac{3}{4}$ SM NA. DME from
A BWD VOR/DME. DME use requires simultaneous reception of
I-BWD and BWD DME.

MALS



MISSED APPROACH: Climbing right turn to 4000 on heading 021° and on BWD VOR/DME R-352 to ELISE INT/BWD 10 DME and hold.

AWOS-3 118.325	FORT WORTH CENTER 127.45 290.3	UNICOM 122.8 (CTAF) 0
--------------------------	------------------------------------------	---------------------------------



BROWNWOOD, TEXAS

Amdt 5A 10JUL25

31°48'N-98°57'W

BROWNWOOD RGNL (BWD)

LOC RWY 17

SC-3, 10 JUL 2025 to 07 AUG 2025

SC-3, 10 JUL 2025 to 07 AUG 2025