

WAAS

CH **82524**

**W01A**

APP CRS

**013°**

Rwy Idg

**5517**

TDZE

**72**

Apt Elev

**80**

**RNAV (GPS) RWY 1**

REPUBLIC (F'RG)

RNP APCH - GPS.

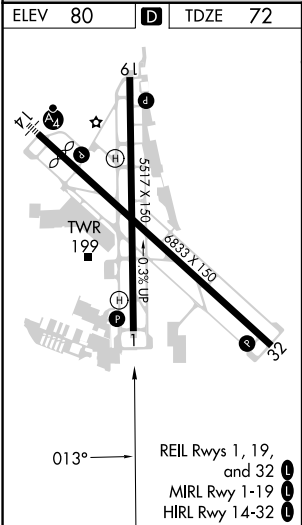
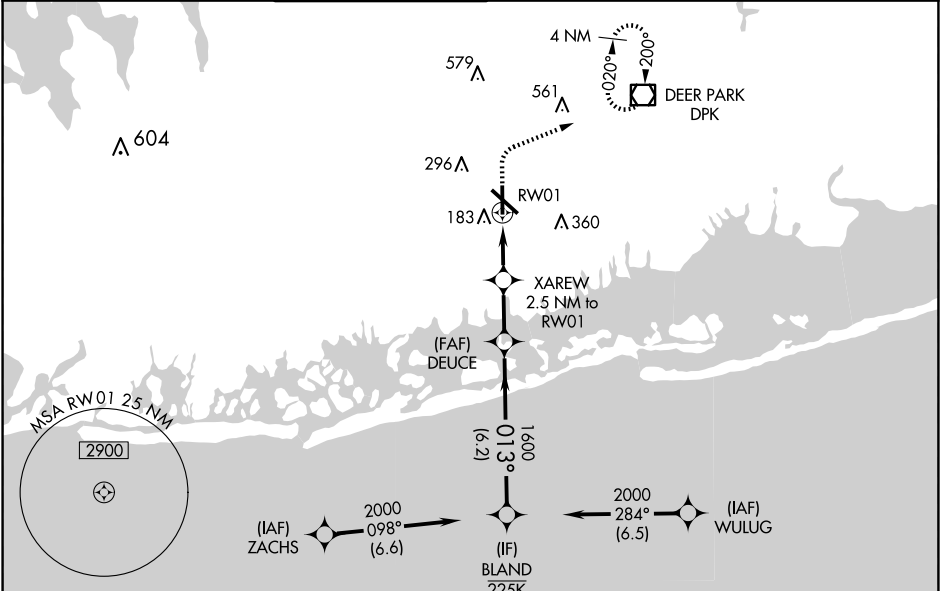
⚠

For uncompensated Baro-VNAV systems, LNAV/VNAV NA below -12°C or above 54°C.  
Rwy 1 helicopter visibility reduction below ¾ SM NA.

MISSED APPROACH:

(Do not exceed 190K until DPK VOR/DME)  
Climb to 800 then climbing right turn to 3000 direct DPK VOR/DME and hold, continue climb-in-hold to 3000.

ATIS <b>126.65</b>	NEW YORK APP CON <b>128.125 269.0</b>	REPUBLIC TOWER ★ <b>118.8 (CTAF) 0 279.65</b>	GND CON <b>121.6 269.6</b>	CLNC DEL <b>128.25</b>	CLNC DEL <b>128.25</b> (When twr closed)	UNICOM <b>122.95</b>
-----------------------	--	--	-------------------------------	---------------------------	--	-------------------------



800 3000 DPK				
VGSI and RNAV glidepath not coincident (VGSI Angle 3.09° TCH 44).				
CATEGORY	A	B	C	D
LPV DA	335-7/8 263 (300-7/8)			
LNAV/VNAV DA	370-7/8 298 (300-7/8)			
LNAV MDA	460-1 388 (400-1)		460-1 3/8 388 (400-1 1/8)	
CIRCLING	640-1 560 (600-1)	720-1 640 (700-1)	860-2 1/4 780 (800-2 1/4)	1000-3 920 (1000-3)