

REDSTONE ARSENAL, ALABAMA

WAAS CH 45638 W17A	APCH CRS 173°	Rwy ldg TDZE Arprt Elev	7300 685 685
--------------------------	------------------	-------------------------------	--------------------

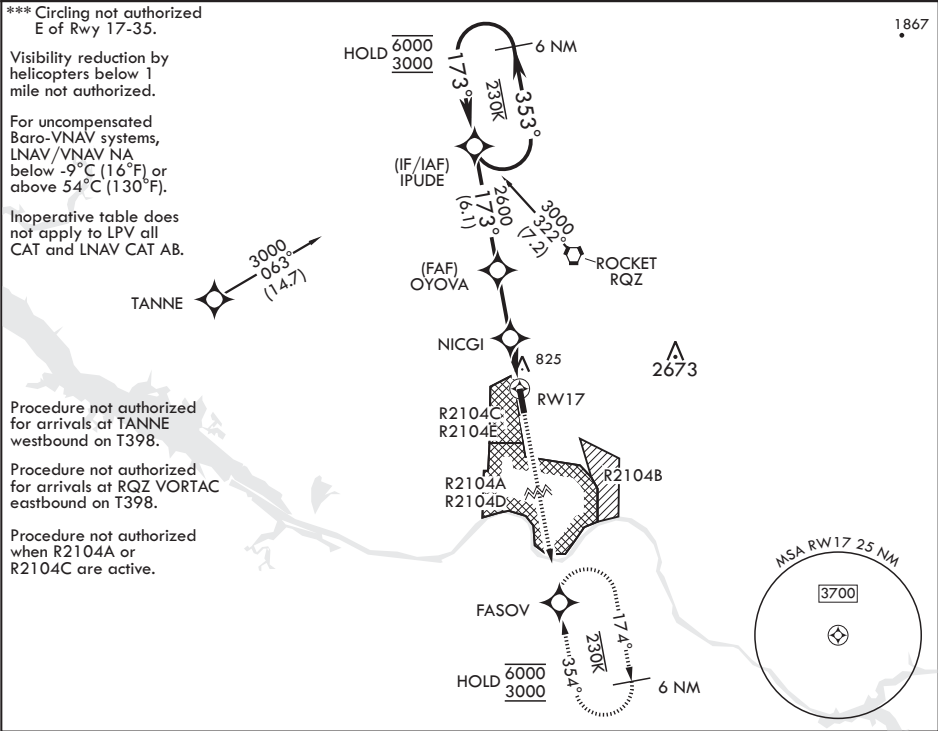
- (USA)

RNAV (GPS) RWY 17

REDSTONE AAF (KHUA)

RNP APCH - GPS	MALSR A5	MISSED APPROACH: Climb to 3000 direct FASOV and hold.
* When ALS inop, increase CAT ABCD vis to 1 1/4 miles; increase CAT E vis to 1 1/2 miles. ** When ALS inop, increase CAT CDE vis to 1 3/8 miles.		

ATIS 120.65	HUNTSVILLE APP CON/DEP CON* 125.6 354.1	TOWER* 126.95 (CTAF) 290.275	PAR
----------------	--	---------------------------------	-----



6 NM Holding Pattern	IPUDE	3000	FASOV	ELEV 685	TDZE 685
6000 3000	353°	173°	173°	173°	173°
GP 3.00° TCH 46	OYOVA	NICGI	RWY 17	BCN 694	35
	2600	1520			
	3.4 NM	2.5 NM			
CATEGORY	A	B	C	D	E
LPV DA	935-1	250	(300-1)		
LNAV/VNAV DA*	1113-1	428	(500-1)		
LNAV MDA**	1180-1	495	(500-1)		
CIRCLING***	1200-1 515 (600-1)	1240-1 555 (600-1)	1480-2 1/4 795 (800-2 1/4)	1740-3 1055 (1100-3)	

REDSTONE ARSENAL, ALABAMA

34°41'N - 86°41'W

REDSTONE AAF (KHUA)

Amndt 2 05OCT23

RNAV (GPS) RWY 17

SE-4, 10 JUL 2025 to 07 AUG 2025