

APP CRS	Rwy Idg	4558
074°	TDZE	810
	Apt Elev	813

RNAV (GPS) RWY 7

FINDLAY (F'DY)

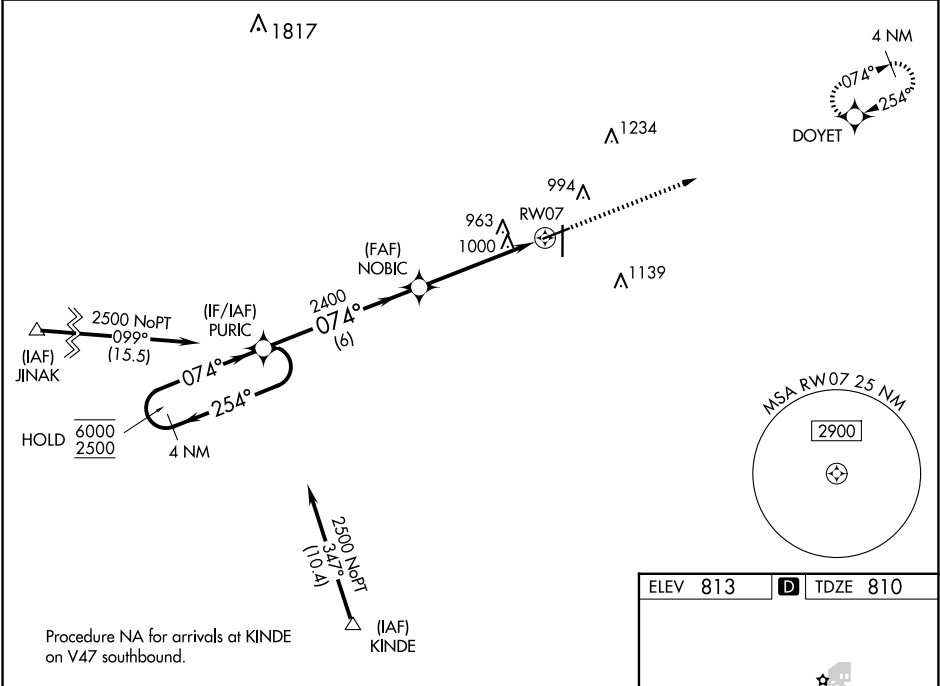
RNP APCH - GPS.

⚠

Baro-VNAV and VDP NA when using Lima Allen County altimeter setting. Rwy 7 helicopter visibility reduction below ¾ SM NA. For uncompensated Baro-VNAV systems, LNAV/VNAV NA below -16°C or above 54°C. When local altimeter setting not received, use Lima altimeter setting and increase LNAV/VNAV DA to 1391 feet and all visibilities ¾ SM. Increase all MDAs 80 feet and LNAV visibility Cat C/D ½ SM, and Circling visibility Cat C/D ¼ SM. Straight-In Rwy 7 NA at night, Circling Rwy 7 NA at night.

MISSED APPROACH:
Climb to 2500 direct
DOYET and hold.

ASOS 132.85	TOLEDO APP CON 120.8 317.55	UNICOM 122.725 (CTAF) 0
----------------	--------------------------------	----------------------------



4 NM Holding Pattern

VGSI and RNAV glidepath not coincident (VGSI Angle 3.00/ TCH 24).

2500 DOYET

GP 3.00° TCH 39

6000 2500

254° 074°

PURIC

NOBIC

2400

1.4 NM to RW07

RW07

6 NM 3.5 NM 1.4

CATEGORY	A	B	C	D
LNAV/VNAV DA	1311-1¾ 501 (500-1¾)			
LNAV MDA	1260-1	450 (500-1)	1260-1¾	450 (500-1¾)
CIRCLING	1440-1	627 (700-1)	1440-1¾ 627 (700-1¾)	1540-2¼ 727 (800-2¼)

HIRL Rwy 7-25 and 18-36 0

REIL Rwy 7, 25 and 36 0