

WAAS CH <b>72705</b> <b>W36A</b>	APP CRS <b>005°</b>	Rwy Idg TDZE Apt Elev <b>6499</b> <b>809</b> <b>813</b>
--	------------------------	--

RNAV (GPS) RWY 36

FINDLAY (F'DY)

RNP APCH-GPS.

▼

For uncompensated Baro-VNAV systems, LNAV/VNAV NA below -16°C or above 47°C.

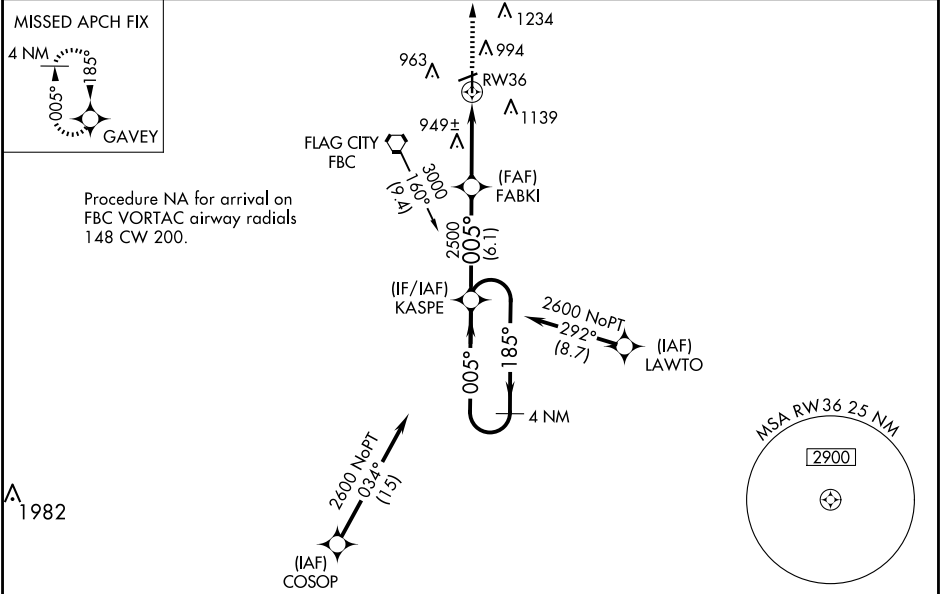
▲

Baro-VNAV and VDP NA when using Lima Allen County altimeter setting.

When local altimeter setting not received, use Lima Allen County altimeter setting: increase all DAs/MDAs 80 feet; increase LNAV Cat C/D visibility  $\frac{1}{8}$  SM and Circling Cat C/D visibility  $\frac{1}{4}$  SM. Circling Rwy 7 NA at night.

MISSED APPROACH:  
Climb to 2500 direct GAVEY and hold.

ASOS <b>132.85</b>	TOLEDO APP CON <b>120.8 317.55</b>	UNICOM <b>122.725 (CTAF)</b>
-----------------------	---------------------------------------	---------------------------------



ELEV 813 D TDZE 809

4 NM Holding Pattern

2600

185°

005°

KASPE

2500

005°

FABKI

2500

\*1.2 NM to RW36

RW36

\*LNAV only

GP 3.00° TCH 47

6.1 NM

3.9 NM

1.2

CATEGORY

A

B

C

D

LPV DA

1106-1

297 (300-1)

LNAV/ VNAV DA

1229-1½

420 (500-1½)

LNAV MDA

1220-1

411 (500-1)

1220-1¼

411 (500-1¼)

CIRCLING

1440-1

627 (700-1)

1440-1¾

627 (700-1¾)

1540-2¼

727 (800-2¼)

HIRL Rwy 7-25 and 18-36

REIL Rwy 7, 25 and 36

81

75

5883 X 100

6499 X 100

36

005°

EC-2, 10 JUL 2025 to 07 AUG 2025

EC-2, 10 JUL 2025 to 07 AUG 2025