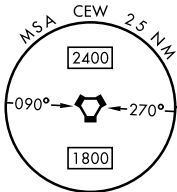
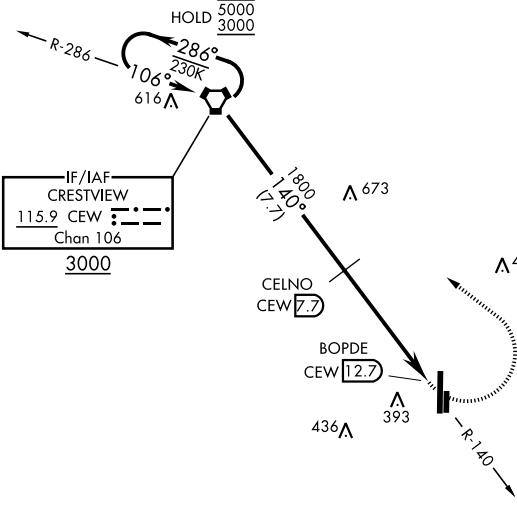
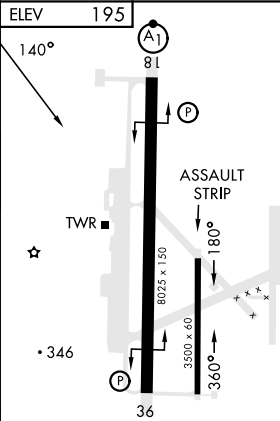
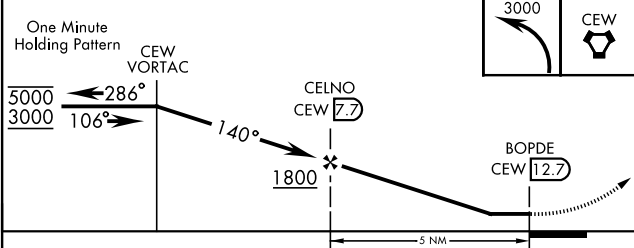


VORTAC CEW 115.9 Chan 106	APCH CRS 140°	Rwy Idg THRE Arprt Elev NA NA 195	[USAF]	DUKE FLD (EGLIN AF AUX NR 3) (KEGI)
DME required		MISSED APPROACH: Climbing left turn to 3000 direct CEW VORTAC and hold.		
ATIS ★ 244.575	EGLIN APP CON 125.1 281.45 (271° - 089°) 132.1 360.6 (090° - 270°)		DUKE TOWER ★ 133.2 290.425	GND CON 123.25 251.125



EMERG SAFE ALT 100 NM 3500



CATEGORY	A	B	C	D	E
CIRCLING	700-1 505 (600-1)	740-1 545 (600-1)	740-1½ 545 (600-1½)	760-2 565 (600-2)	820-2¼ 625 (700-2¼)

HIRL Rwy 18-36

SE-3, 10 JUL 2025 to 07 AUG 2025

SE-3, 10 JUL 2025 to 07 AUG 2025