

TACAN Z RWY 18

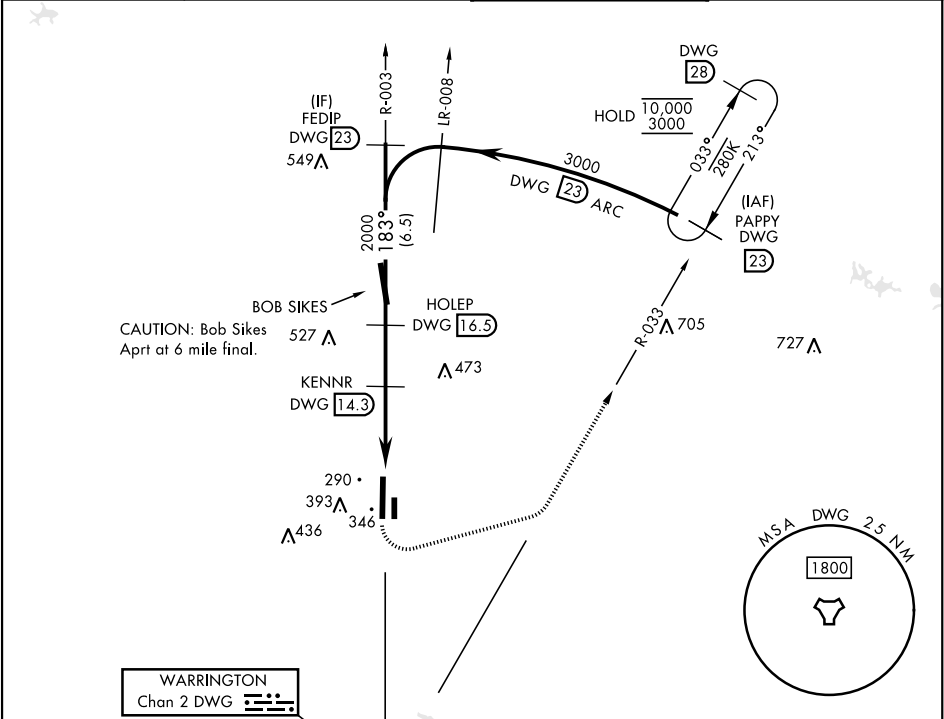
TACAN	DWG	APCH CRS	Rwy Idg
Chan 2	183°	183°	8025
		TDZE	195
		Arprt Elev	195

[USAF]

DUKE FLD (EGLN AF AUX NR 3) (KEGI)

* When ALS inop, increase RVR to 55, vis to 1 mile.	ALS F-1 A1	MISSED APPROACH: Climb to 800, then climbing left turn to 3000 on heading 078° and DWG TACAN R-033 to PAPPY/23 DME and hold.
---	---------------	--

ATIS ★ 244.575	EGLN APP CON 125.1 281.45 (271°- 089°) 132.1 360.6 (090°- 270°)	TOWER ★ 133.2 290.425	GND CON 123.25 251.125
-------------------	---	--------------------------	---------------------------



ELEV 195		TDZE 195	
183°		81	
A1		P	
TWR		ASSAULT STRIP	
346		180°	
P		360°	
HRL Rwy 18-36		3600 x 60	
36		8025 x 150	

CATEGORY	A	B	C	D	E
S-18*	560/24 365 (400-½)		560/35 365 (400-¾)		
CIRCLING	680-1 485 (500-1)	740-1 545 (600-1)	740-1½ 545 (600-1½)	760-2 565 (600-2)	820-2¼ 625 (700-2¼)

TACAN Z RWY 18

SE-3, 10 JUL 2025 to 07 AUG 2025

SE-3, 10 JUL 2025 to 07 AUG 2025