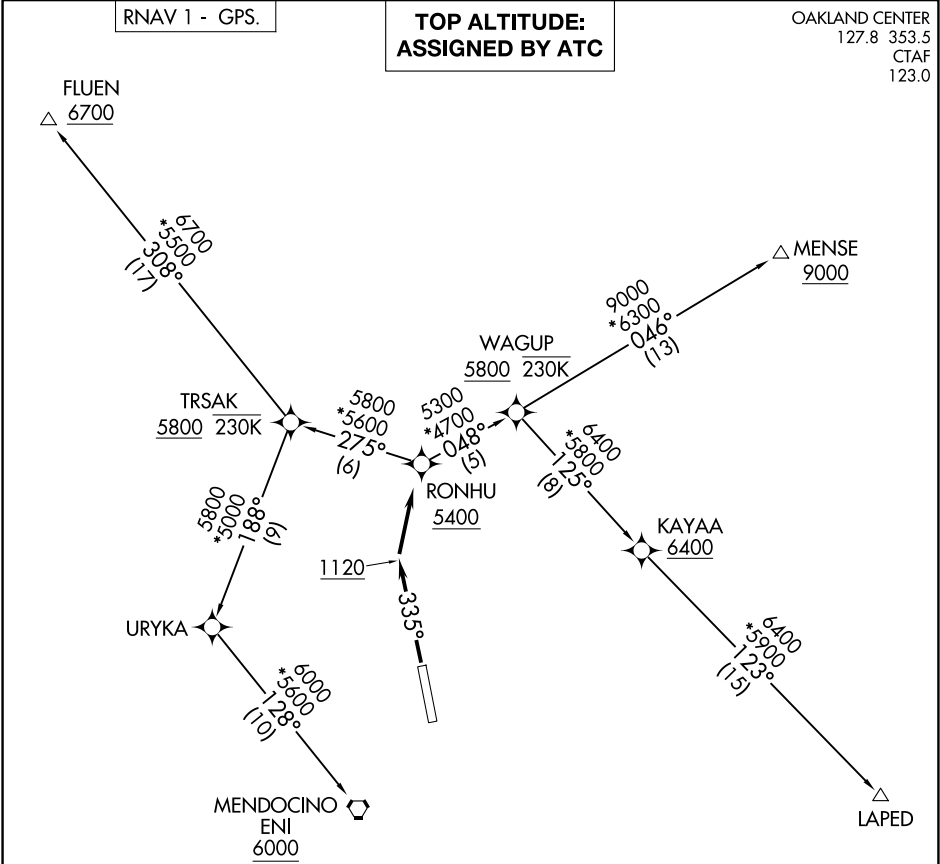


OAKLAND CENTER
127.8 353.5
CTAF
123.0

RNAV 1 - GPS.

TOP ALTITUDE:
ASSIGNED BY ATC



TAKEOFF MINIMUMS

Rwy 33: Standard with minimum climb of 297' per NM to 4000.

NOTE: Do not exceed 230K until passing WAGUP.

NOTE: Do not exceed 230K until passing TRSAK.

NOTE: Chart not to scale.



DEPARTURE ROUTE DESCRIPTION

TAKEOFF RUNWAY 33: Climb on heading 335° to 1120, then direct RONHU at or above 5400, thence

. . . . on assigned transition, maintain ATC assigned altitude, expect filed altitude 10 minutes after departure.

FLUEN TRANSITION (RONHU2.FLUEN)

LAPED TRANSITION (RONHU2.LAPED)

MENDOCINO TRANSITION (RONHU2.ENI)

MENSE TRANSITION (RONHU2.MENSE)