

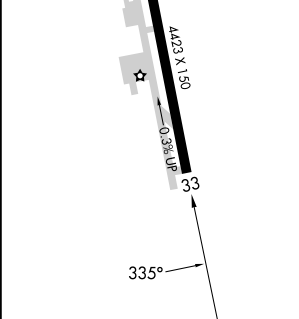
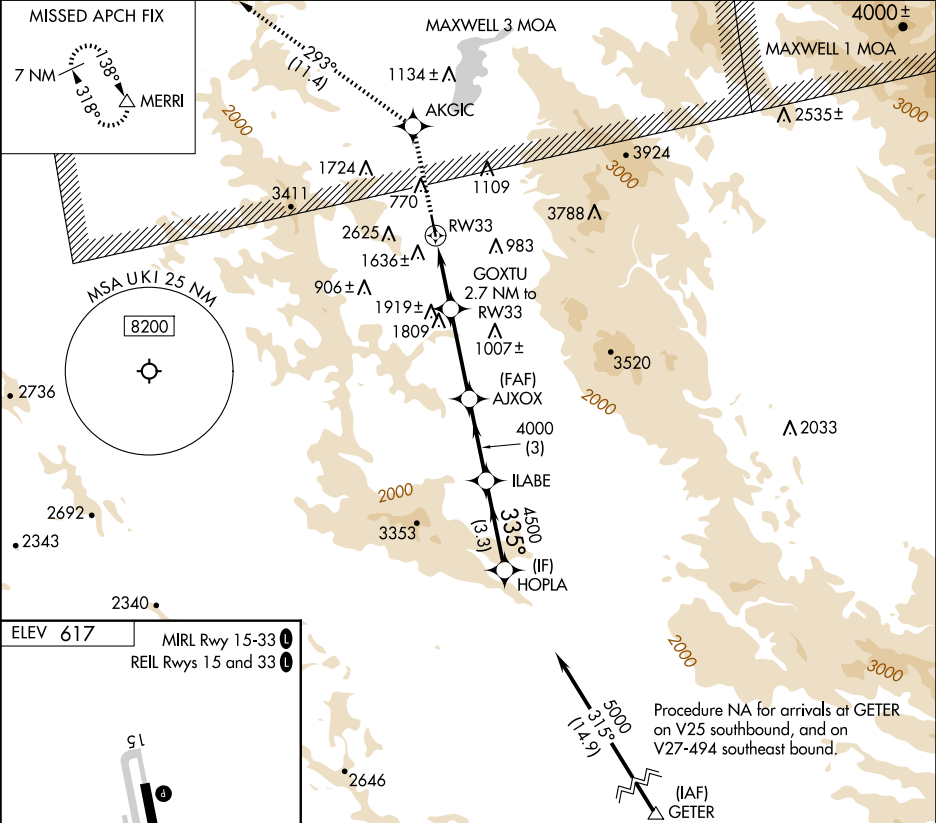
APP CRS	Rwy Idg	N/A
335°	TDZE	N/A
	Apt Elev	617

RNAV (GPS)-B

UKIAH MUNI (UKI)

RNP APCH - GPS.		
<div><div>⚠</div><div>⚠</div></div> <div>Circling NA southwest of Rwy 15-33. Circling Rwy 33 NA at night. Rwy 33 helicopter visibility reduction below 1 SM NA. When local altimeter setting not received, procedure NA.</div>		MISSED APPROACH: Climb to 6700 direct AKGIC and on track 293° to MERRI and hold, continue climb-in-hold to 6700.

ASOS 119.275	OAKLAND CENTER 127.8 353.5	UNICOM 123.0 (CTAF) 0
-----------------	-------------------------------	--------------------------



6700	AKGIC	tr 293°	MERRI						
				GOXTU 2.7 NM to RW33	AJXOX	ILABE	HOPLA		
				2840	4000	4500	5000		
				2.7 NM	3.3 NM	3 NM	3.3 NM		
CATEGORY	A	B	C	D					
<div><div>Ⓢ</div><div>CIRCLING</div></div>	2080-1¼ 1463 (1500-1¼)	2100-1½ 1483 (1500-1½)	2140-3 1523 (1600-3)	2780-3 2163 (2200-3)					