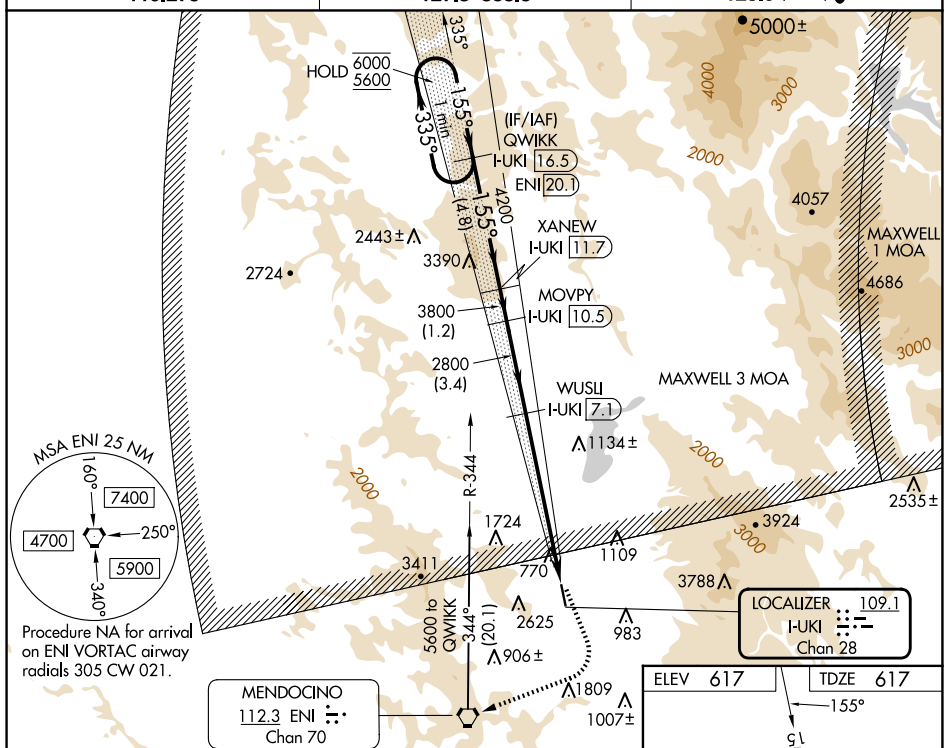


LOC RWY 15
UKIAH MUNI (UKI)

MISSED APPROACH: Climbing left turn to 4100 on heading 145° then climbing right turn to 5600 direct ENI VORTAC and on ENI VORTAC R-344 to QWIKK /I-UKJ 16.5 DME and hold.

T Circling NA southwest of Rwy 15-33. Circling Rwy 33 NA at
A night. Rwy 15 helicopter visibility reduction below $\frac{3}{4}$ SM NA.
When local altimeter setting not received, procedure NA.

UNICOM
123.0 (CTAF) **L**

SW-2, 10 JUL 2025 to 07 AUG 2025