

LOC I-GNJ <u>111.75</u>	APP CRS 226°	Rwy Ldg TDZE Apt Elev	7004 979 979
-----------------------------------	------------------------	-----------------------------	---

ILS or LOC RWY 22
BLUE GRASS (LEX)

T When local altimeter setting not received, use Frankfort altimeter setting: increase
A S-ILS 22 DA to 1241 feet and all visibilities $\frac{1}{8}$ SM; increase all MDAs 80 feet and
visibility Cats C and D $\frac{1}{8}$ SM.

MISSED APPROACH: Climb to 1400 then climbing left turn to 3100 direct HYK VOR/DME and hold, continue climb-in-hold to 3100.

ATIS 126.3	LEXINGTON APP CON 120.15 259.3 (040°-220°) 120.75 298.9 (221°-039°)	LEXINGTON TOWER 119.1 257.8	GND CON 121.9	CLNC DEL 132.35
----------------------	---	---------------------------------------	-------------------------	---------------------------

Procedure NA for arrivals at SADDL on V57 northbound.

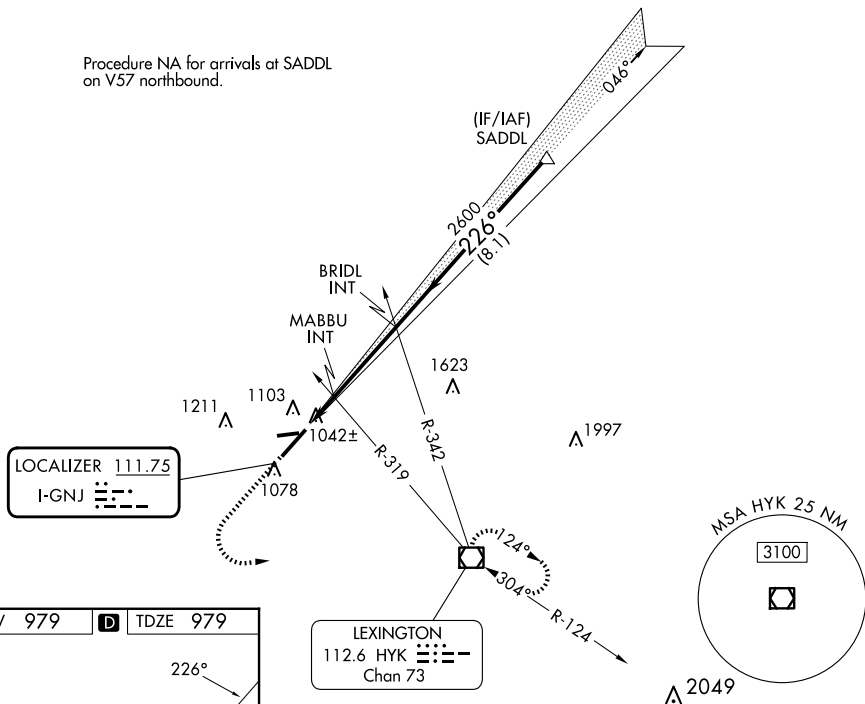


Diagram illustrating the FAF to MAP 4.9 NM for Runway 4. The diagram shows a 0.6% UP climb segment followed by a 0.5% UP climb segment. The first segment is labeled '4000 X 75' and the second '7004 X 150'. A 226° heading is indicated for the second segment. Waypoints are marked with circled numbers 22, 27, and 28. A TWR (Tower) is marked with a star symbol.