

24305

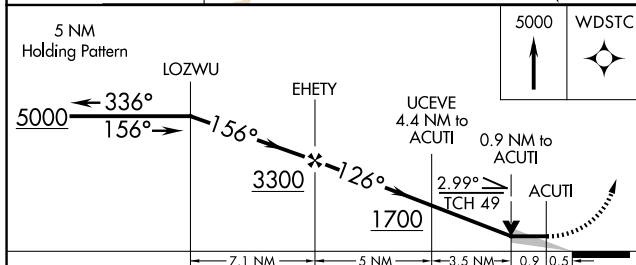
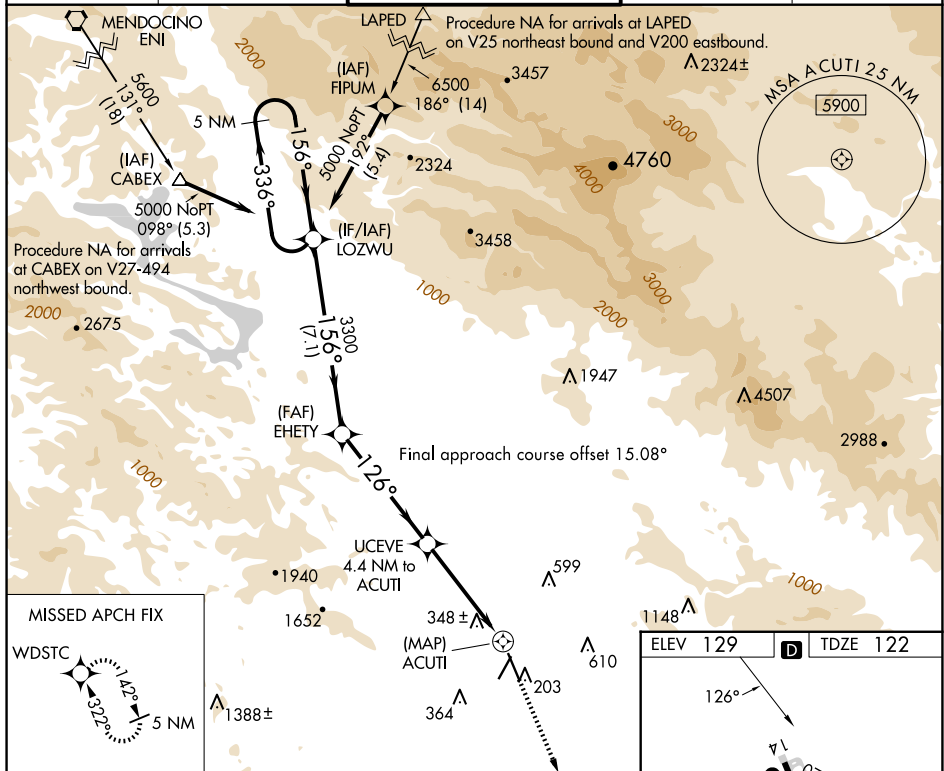
RNAV (GPS) RWY 14

CHARLES M SCHULZ/SONOMA COUNTY (STS)

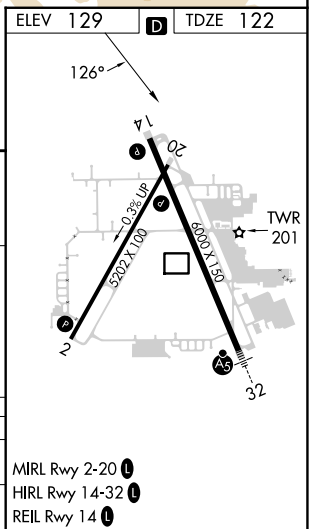
T
A Rwy 14 helicopter visibility reduction below $\frac{3}{4}$ SM NA.

MISSED APPROACH: Climb to 5000 direct WDSTC and hold, continue climb-in-hold to 5000.

ATIS 120.55	OAKLAND CENTER 127.8 353.5	SANTA ROSA TOWER★ 118.5 (CTAF) 0 363.0	GND CON 121.9	UNICOM 122.95
-----------------------	--------------------------------------	--	-------------------------	-------------------------



CATEGORY	A	B	C	D
LNAV MDA	600-1	478 (500-1)	600-1 $\frac{3}{8}$	478 (500-1 $\frac{1}{2}$)
C CIRCLING	600-1 471 (500-1)	680-1 551 (600-1)	1080-3 951 (1000-3)	1420-3 1291 (1300-3)



CHARLES M SCHULZ/SONOMA COUNTY (STS)
38°31'N-122°49'W PNAV (GPS) RWY 14

RNAV (GPS) RWY 14

SW-2. 10 JUL 2025 to 07 AUG 2025