

| | | |
|--|------------------------|---|
| WAAS CH 56629 W33A | APP CRS 326° | Rwy Idg 3327 TDZE 66 Apt Elev 67 |
|--|------------------------|---|

RNAV (GPS) RWY 33

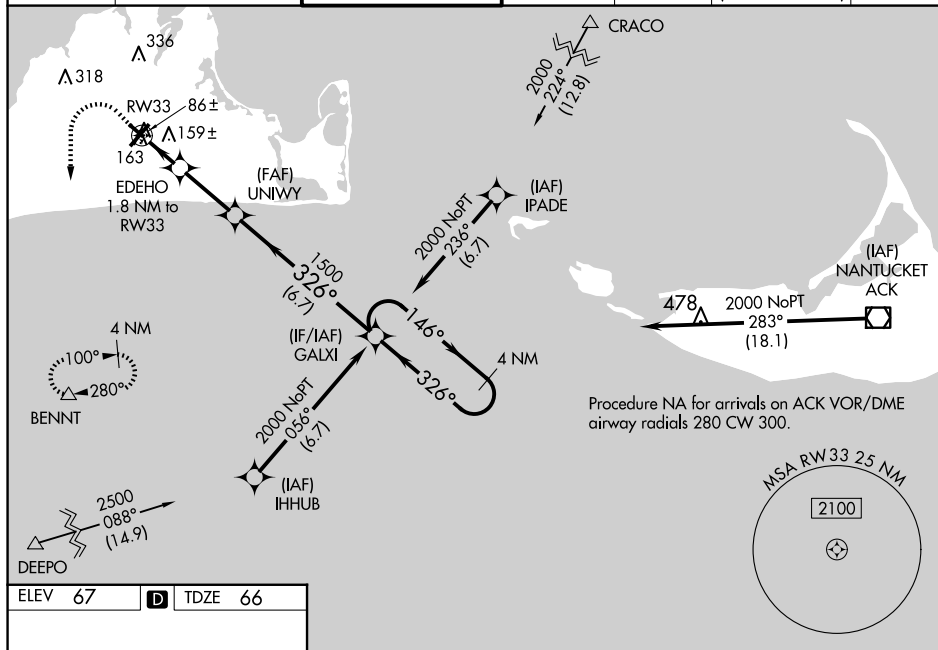
MARTHA'S VINEYARD (MVY)

RNP APCH.

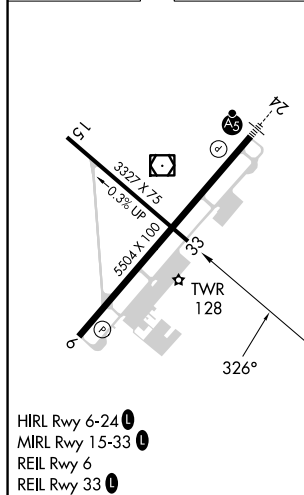
T Baro-VNAV NA when using Hyannis altimeter setting. For uncompensated Baro-VNAV systems, **A** LNAV/VNAV NA below -15°C or above 43°C. Rwy 33 helicopter visibility reduction below $\frac{3}{4}$ SM NA. When local altimeter setting not received, use Hyannis altimeter setting and increase LPV DA to 370 feet, LNAV/VNAV DA to 393 feet, and all visibilities $\frac{1}{8}$ SM, increase all MDA 60 feet and Cat c and D visibilities $\frac{1}{4}$ SM. Circling Rwy 15 NA at night. VDP NA with Hyannis altimeter setting.

MISSED APPROACH:
Climb to 1400 then
climbing left turn to
2000 direct BENNT
and hold.

| | | | | | | |
|-----------------------|---------------------------------|--|--------------------------|---------------------------|---|-------------------------|
| ATIS 126.25 | BOSTON APP CON 133.75 | VINEYARD TOWER * 121.4 (CTAF) 0 | GND CON 124.35 | CLNC DEL 124.35 | CLNC DEL 119.7 (When twr closed) | UNICOM 122.95 |
|-----------------------|---------------------------------|--|--------------------------|---------------------------|---|-------------------------|



| | | |
|---------|----------|---------|
| ELEV 67 | D | TDZE 66 |
|---------|----------|---------|

[illegible]