

WAAS CH <b>93829</b> <b>W15A</b>	APP CRS <b>146°</b>	Rwy Idg TDZE <b>67</b> Apt Elev <b>67</b>
--	------------------------	---

RNAV (GPS) RWY 15

MARTHA'S VINEYARD (MVY)

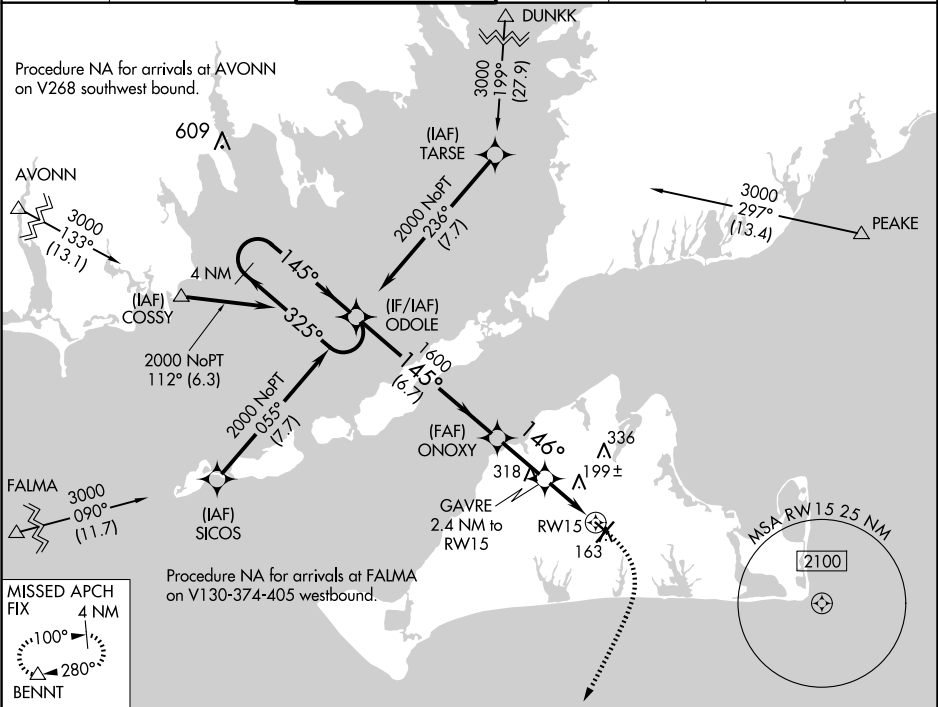
▼

▲

Baro-VNAV NA when using Hyannis altimeter setting. For uncompensated Baro-VNAV systems, LNAV/VNAV NA below -15°C (5°F) or above 54°C (130°F). When local altimeter setting not received, use Hyannis altimeter setting and increase all DA 54 feet and all MDA 60 feet; increase LNAV Cat C and D visibility and Circling Cat C and D visibility ¼ mile. DME/DME RNP-0.3 NA. Helicopter visibility reduction below 1 SM NA. Night landing: Rwy 15 NA.

MISSED APPROACH:  
Climb to 600 then climbing right turn to 2000 direct BENNT and hold.

ATIS <b>126.25</b>	BOSTON APP CON <b>133.75</b>	VINEYARD TOWER ★ <b>121.4</b> (CTAF) <b>0</b>	GND CON <b>124.35</b>	CLNC DEL <b>124.35</b>	CLNC DEL <b>119.7</b> (When twr closed)	UNICOM <b>122.95</b>
-----------------------	---------------------------------	--	--------------------------	---------------------------	---	-------------------------



ELEV 67

D

TDZE 67

146°

15

3327 X 75

-0.3% UP

5504 X 100

33

TWR 128

HIRL Rwy 6-24

MIRL Rwy 15-33

REIL Rwy 6

REIL Rwy 33

4 NM Holding Pattern

ODOLE

ONOXY

GAVRE 2.4 NM to RW15

RW15

\*LNAV only

GP 3.00°

TCH 53

6.7 NM

2.3 NM

2.4 NM

CATEGORY	A	B	C	D
LPV DA		317-1	250 (300-1)	
LNAV/ VNAV DA		317-1	250 (300-1)	
LNAV MDA	460-1	393 (400-1)	460-1½	393 (400-1½)
CIRCLING	500-1 433 (500-1)	540-1 473 (500-1)	700-1¾ 633 (700-1¾)	780-2¼ 713 (800-2¼)