
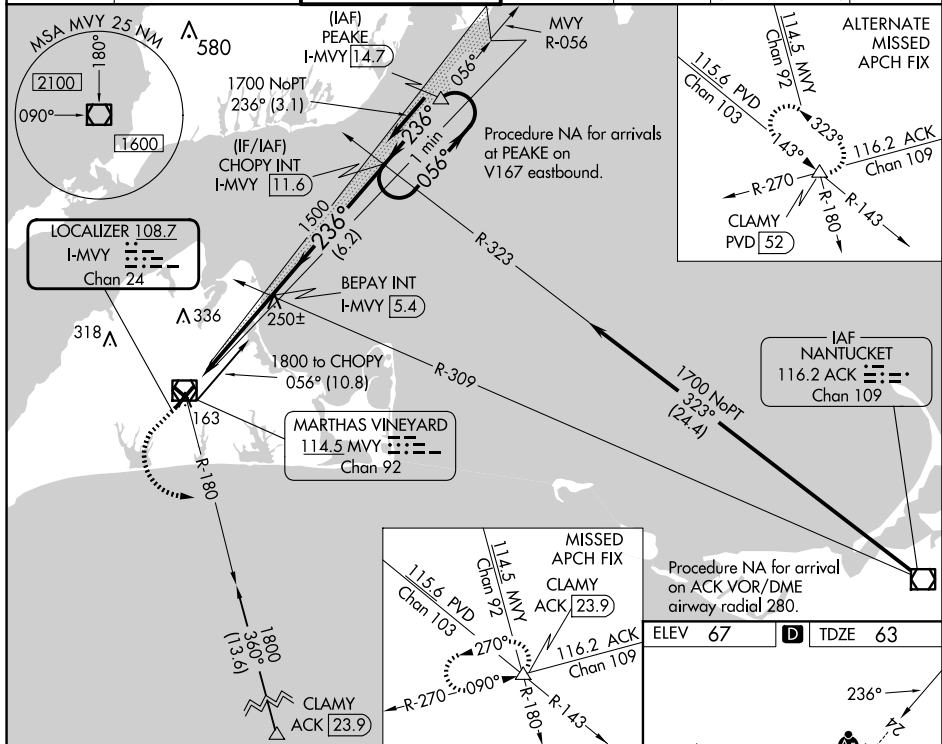


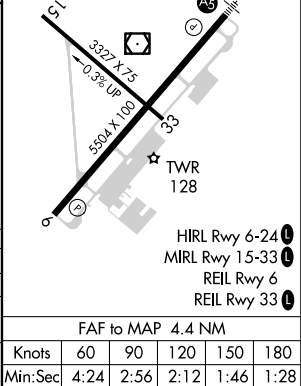
ILS or LOC RWY 24

- | | |
|--|---|
| <p>MALSR</p>  | <p>MISSED APPROACH:
 Climb to 800 then
 climbing left turn to 2500
 on MYY VOR/DME R-180
 to CLAMY INT/ACK 23.9
 DME and hold.</p> |
|--|---|

ATIS 126.25	BOSTON APP CON 133.75	VINEYARD TOWER ★ 121.4 (CTAF) 0	GND CON 124.35	CLNC DEL 124.35	CLNC DEL 119.7 (When twr closed)	UNICOM 122.95
-----------------------	---------------------------------	---	--------------------------	---------------------------	---	-------------------------



<div style="display: flex; justify-content: space-between; align-items: center;"> <div style="text-align: center;"> <p>800 ↑</p> <p>2500 ↘</p> <p>CLAMY △</p> </div> <div style="text-align: center;"> <p>Use I-MVY DME when on the localizer course.</p> <p>BEPAY INT I-MVY 5.4</p> </div> <div style="text-align: center;"> <p>CHOPY INT I-MVY 11.6</p> </div> <div style="text-align: center;"> <p>One Minute Holding Pattern</p> </div> </div>				
<p>*LOC only</p> <p style="text-align: right;">056° → 1700 ← 236°</p> <p style="text-align: right;">GS 3.00° TCH 51</p>				
CATEGORY	A	B	C	D
S-ILS 24 **	263/24 200 (200-½)			
S-LOC 24	500/24	437 (500-½)	500/40	437 (500-¾)
CIRCLING	500-1 433 (500-1)	540-1 473 (500-1)	700-1¾ 633 (700-1¾)	780-2¼ 713 (800-2¼)



NE-1, 10 JUL 2025 to 07 AUG 2025

NE-1, 10 JUL 2025 to 07 AUG 2025