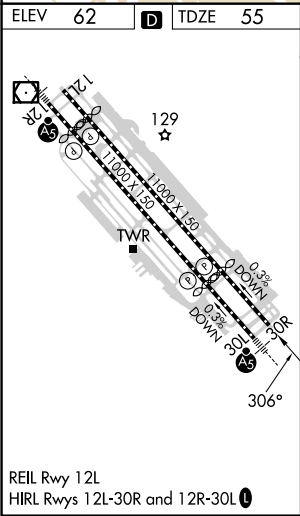
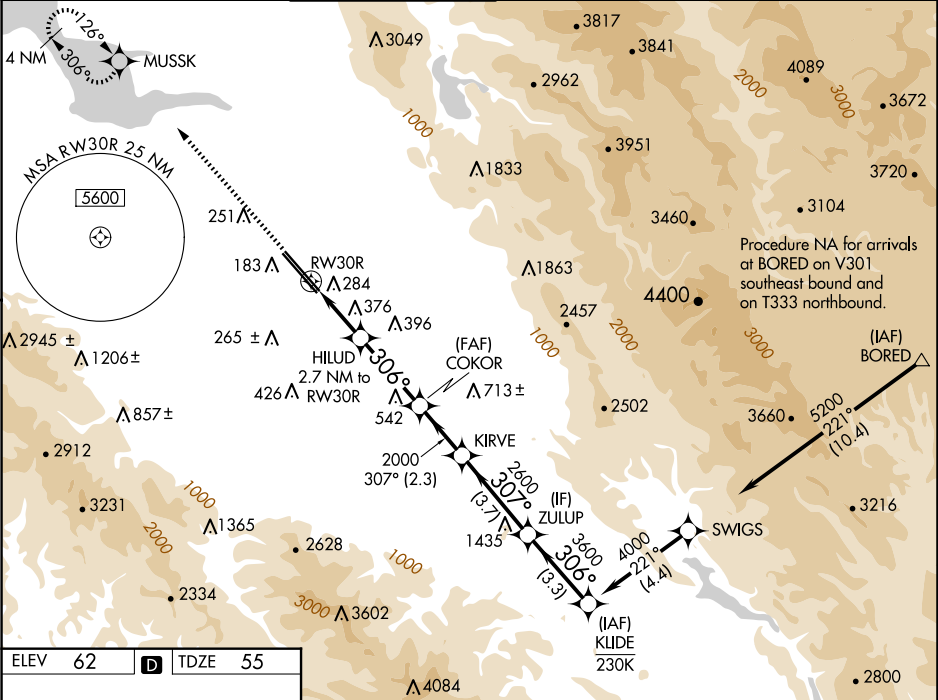





WAAS CH <b>72901</b> <b>W30B</b>	APP CRS <b>306°</b>	Rwy Idg TDZE <b>55</b> Apt Elev <b>62</b>	<b>7597</b>
--	------------------------	---	-------------

RNAV (GPS) Y RWY 30R

NORMAN Y MINETA SAN JOSE INTL (SJC)

RNP APCH-GPS.		MISSED APPROACH: Climb to 2300 direct MUSSK and hold.			
▼ For uncompensated Baro-VNAV systems, LNAV/VNAV NA below -1°C or above 54°C.					
D-ATIS <b>126.95</b>	NORCAL APP CON <b>120.1 290.25</b>	SAN JOSE TOWER ★ <b>124.0</b> (CTAF) <b>0 257.6</b>	GND CON <b>121.7</b>	CLNC DEL <b>118.0</b>	UNICOM <b>122.95</b>



2300 ↑		MUSSK 		VGSI and RNAV glidepath not coincident (VGSI Angle 3.00/TCH 69).					ZULUP		KLIDE		
		RW30R		HILUD 2.7 NM to RW30R		COKOR 2000		KIRVE		2600		4000	
1.6 NM		1.1 NM		3.2 NM		2.3 NM		3.7 NM		3.3 NM		GP 3.00° TCH 55	
CATEGORY		A		B		C		D					
LPV DA				255-¾		200 (200-¾)							
LNAV/ VNAV DA				541-1⅜		486 (500-1⅜)							
LNAV MDA		640-1		585 (600-1)		640-1¾		585 (600-1¾)					
 CIRCLING		640-1 578 (600-1)		700-1 638 (700-1)		700-1¾ 638 (700-1¾)		700-2 638 (700-2)					