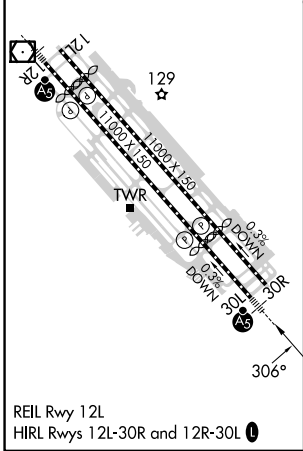
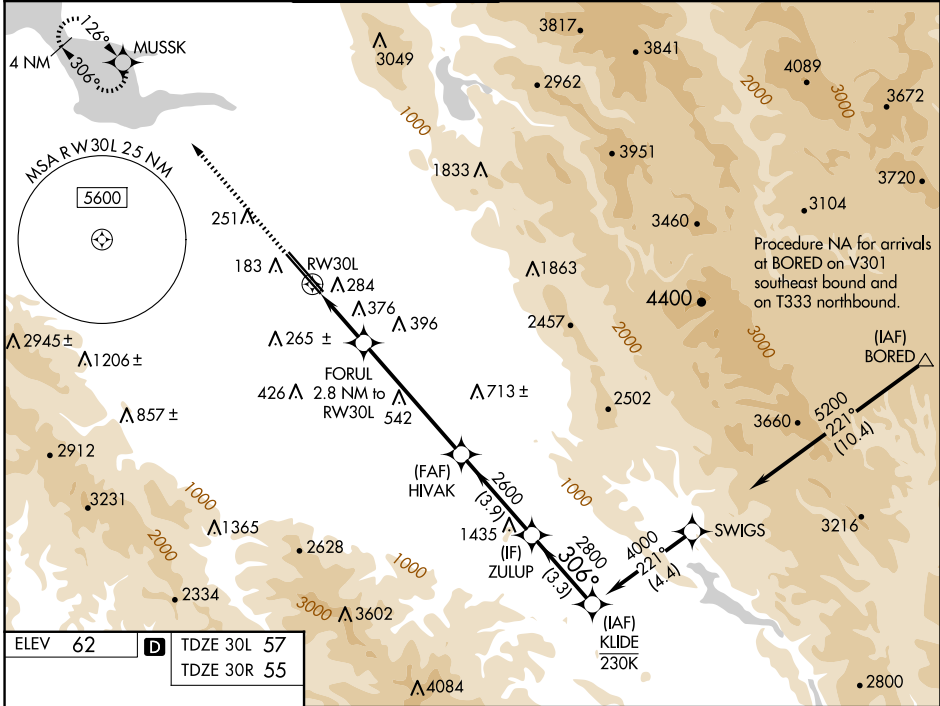

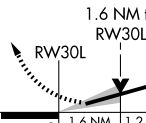


WAAS CH 97306 W30A	APP CRS 306°	Rwy Idg TDZE Apt Elev	30L 7614 57 62	30R 7597 55 62
--	------------------------	-----------------------------	--	--

RNAV (GPS) Y RWY 30L
NORMAN Y MINETA SAN JOSE INTL (SJC)

RNP APCH-GPS. ▼ For uncompensated Baro-VNAV systems, LNAV/VNAV NA below 1°C or above 54°C. For inop ALS, increase LNAV/VNAV all Cats visibility to 1½ SM. * RVR 1800 authorized with use of FD or AP or HUD to DA.				MALSR Rwy 30L A5	MISSED APPROACH: Climb to 2300 direct MUSSK and hold.	
D-ATIS 126.95	NORCAL APP CON 120.1 290.25	SAN JOSE TOWER ★ 124.0 (CTAF) 0 257.6	GND CON 121.7	CLNC DEL 118.0	CPDLC	UNICOM 122.95



2300 MUSSK		VGSi and RNAV glidepath not coincident (VGSi Angle 3.00/TCH 70).				ZULUP		KLIDE	
		FORUL 2.8 NM to RW30L		HIVAK 2600					
		1.6 NM to RW30L		2600		306°		4000	
		1000		2600		2800		GP 3.00° TCH 54	
		1.6 NM		1.2 NM		5.3 NM		3.9 NM	
CATEGORY		A		B		C		D	
LPV DA*				257/24		200 (200-½)			
LNAV/ VNAV DA				540/50		483 (500-1)			
LNAV MDA		640/24		583 (600-½)		640-1¼		583 (600-1¼)	
SIDESTEP 30R				640-1		585 (600-1)			