

WAAS CH <b>90106</b> <b>W12A</b>	APP CRS <b>126°</b>	Rwy ldg TDZE Apt Elev	12R <b>8587</b> <b>46</b> <b>62</b>	12L <b>8831</b> <b>44</b> <b>62</b>
--	------------------------	-----------------------------	--	--

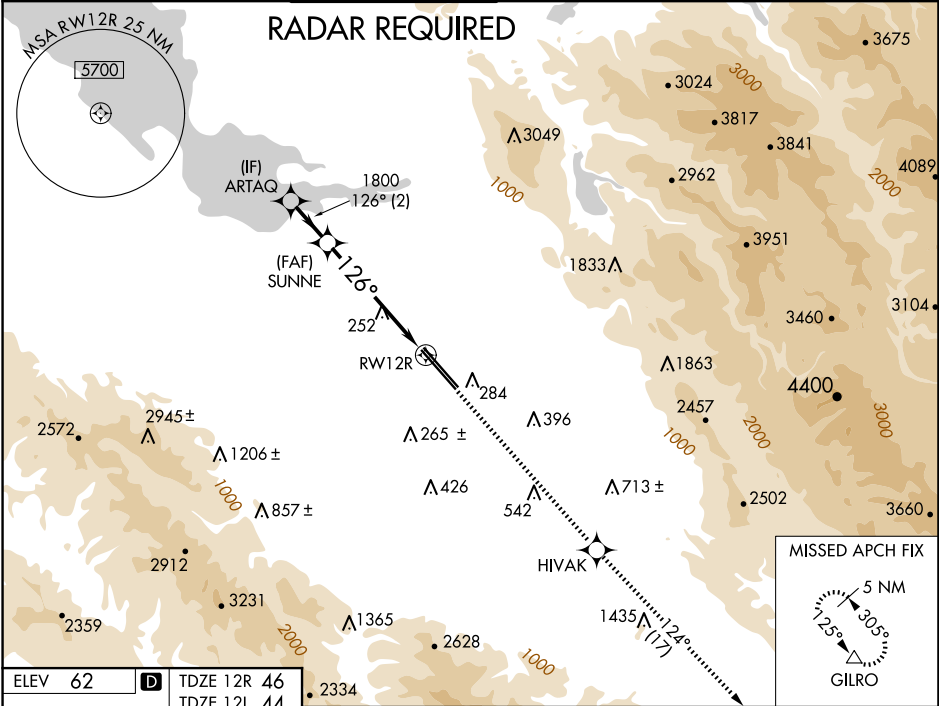
RNAV (GPS) Y RWY 12R  
NORMAN Y MINETA SAN JOSE INTL (SJC)

**⚠** For uncompensated Baro-VNAV systems, LNAV/VNAV NA below -1°C (31°F) or above 54°C (130°F). DME/DME RNP-0.3 NA. For inoperative MALSR, increase LNAV/VNAV all Cats visibility to 1 mile and LNAV Cats C/D visibility to 1½ mile.

MALSR  
Rwy 12R

MISSED APPROACH: Climb to 4600 direct H1VAK and on track 124° to GILRO and hold.

D-ATIS <b>126.95</b>	NORCAL APP CON <b>120.1 290.25</b>	SAN JOSE TOWER ★ <b>124.0 (CTAF) 0 257.6</b>	GND CON <b>121.7</b>	CLNC DEL <b>118.0</b>	CPDLC	UNICOM <b>122.95</b>
-------------------------	---------------------------------------	---	-------------------------	--------------------------	-------	-------------------------



VGSI and RNAV glidepath not coincident (VGSI Angle 3.00/TCH 75).

ARTAQ

SUNNE

GP 3.00°

TCH 58

2 NM

4.1 NM

1.3 NM

1800

126°

1800

124°

4600

H1VAK

tr 124°

GILRO

\*LNAV only

\*1.3 NM to RW12R

RW12R

CATEGORY	A	B	C	D
LPV DA	246-½ 200 (200-½)			
LNAV/VNAV DA	371-⅝ 325 (400-⅝)		371-1 325 (400-1)	
LNAV MDA	520-½ 474 (500-½)		520-1 474 (500-1)	
SIDESTEP 12L	520-1 476 (500-1)		520-1½ 476 (500-1½)	520-2 476 (500-2)