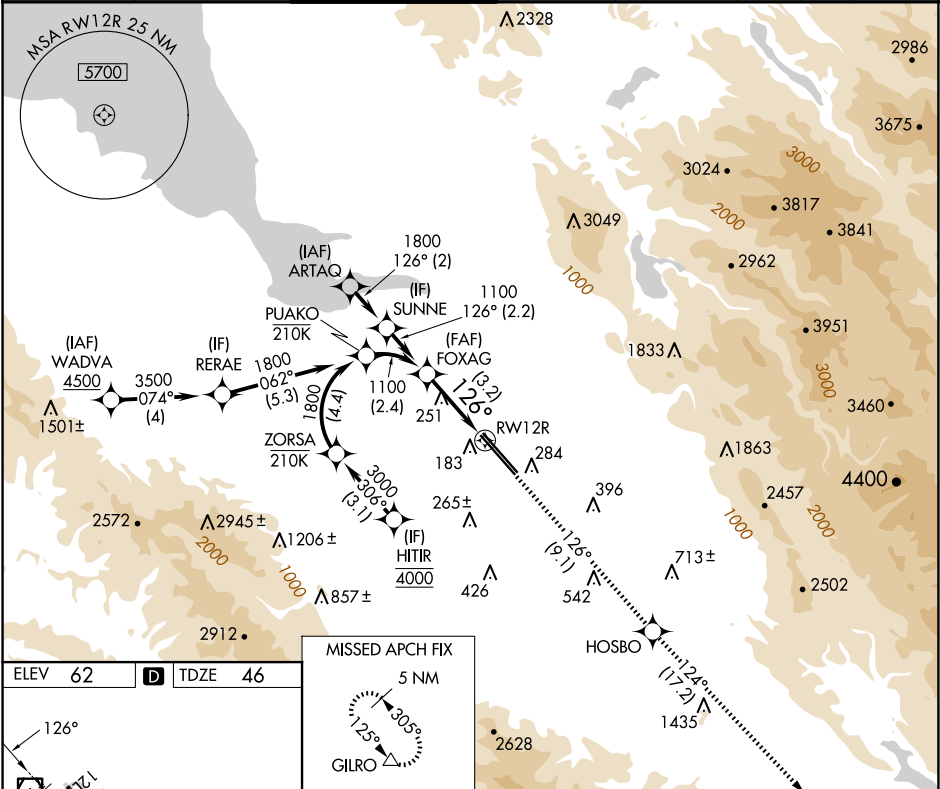


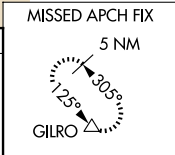
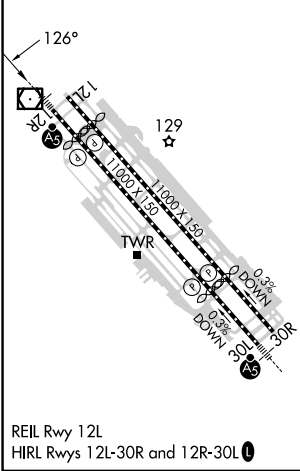
APP CRS	Rwy Idg	8587
126°	TDZE	46
	Apt Elev	62

RNAV (RNP) Z RWY 12R
NORMAN Y MINETA SAN JOSE INTL (SJC)

RNP AR APCH-GPS. ▼ For uncompensated Baro-VNAV systems, procedure NA below 0°C or above 54°C. For inop ALS, increase RNP 0.15 all Cats visibility to RVR 5500.				MALSR ✈	MISSED APPROACH: Climb to 4600 on track 126° to HOSBO and track 124° to GILRO and hold.	
D-ATIS 126.95	NORCAL APP CON 120.1 290.25	SAN JOSE TOWER★ 124.0 (CTAF) 0 257.6	GND CON 121.7	CLNC DEL 118.0	CPDLC	UNICOM 122.95



ELEV 62	D	TDZE 46
---------	---	---------



FOXAG	VGSI and RNAV glidepath not coincident (VGSI Angle 3.00/TCH 75).	4600	HOSBO	GILRO
1100		tr 126°	tr 124°	
GP 3.00° TCH 58				
See planview for multiple IF locations.				
3.2 NM				
CATEGORY	A	B	C	D
RNP 0.15 DA	394/30 348 (400-¾)			
RNP 0.30 DA	486/40 440 (500-¾)			