

APP CRS  
126°

Rwy Idg  
TDZE  
Apt Elev  
8831  
44  
62

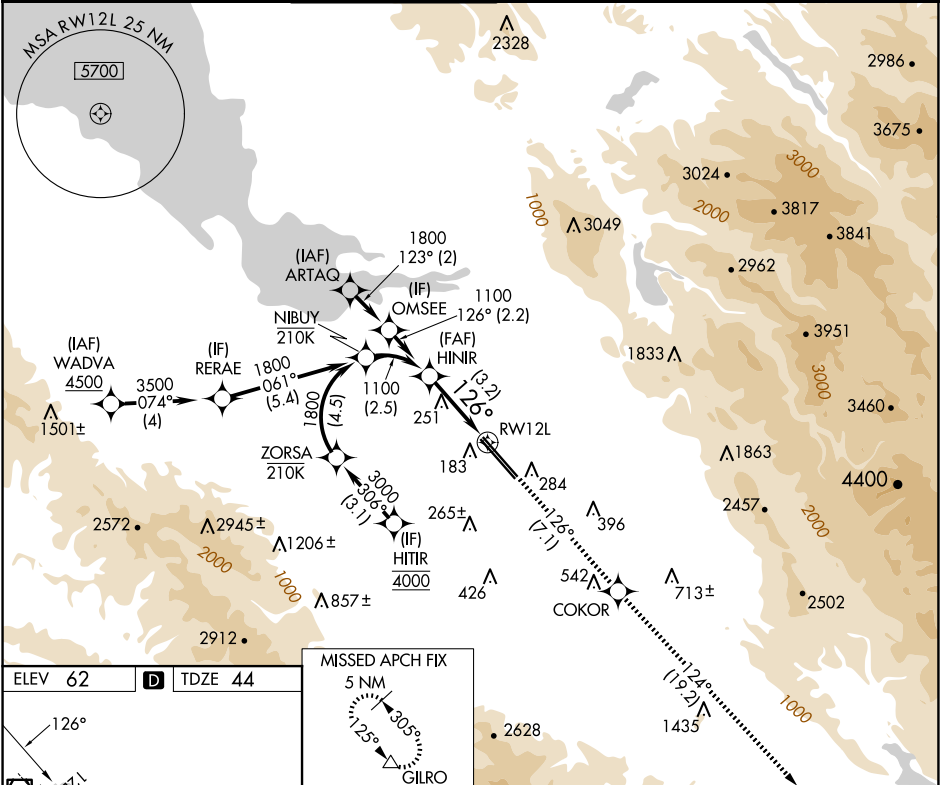
RNAV (RNP) Z RWY 12L  
NORMAN Y MINETA SAN JOSE INTL (SJC)

RNP AR APCH-GPS.

For uncompensated Baro-VNAV systems, procedure NA below 0°C or above 54°C.

MISSED APPROACH: Climb to 4600 on track 126° to COKOR and track 124° to GILRO and hold.

D-ATIS 126.95	NORCAL APP CON 120.1 290.25	SAN JOSE TOWER★ 124.0 (CTAF) 257.6	GND CON 121.7	CLNC DEL 118.0	CPDLC	UNICOM 122.95
------------------	--------------------------------	---------------------------------------	------------------	-------------------	-------	------------------



ELEV 62 TDZE 44

REIL Rwy 12L  
HIRL Rwys 12L-30R and 12R-30L

MISSED APCH FIX  
5 NM  
GILRO

HINIR 1100

VGSI and RNAV glidepath not coincident (VGSI Angle 3.00/TCH 70).

4600 COKOR GILRO

tr 126° tr 124°

GP 3.00°  
TCH 57

See planview for multiple IF locations.

3.2 NM

CATEGORY	A	B	C	D
RNP 0.18 DA	400-1 356 (400-1)			
RNP 0.30 DA	451-1½ 407 (400-1½)			

AUTHORIZATION REQUIRED