

LOC/DME I-SJC	30L	30R
110.9	7614	7597
Chan 46	TDZE 57	55
	Apt Elev 62	62

ILS or LOC RWY 30L

NORMAN Y MINETA SAN JOSE INTL (SJC)

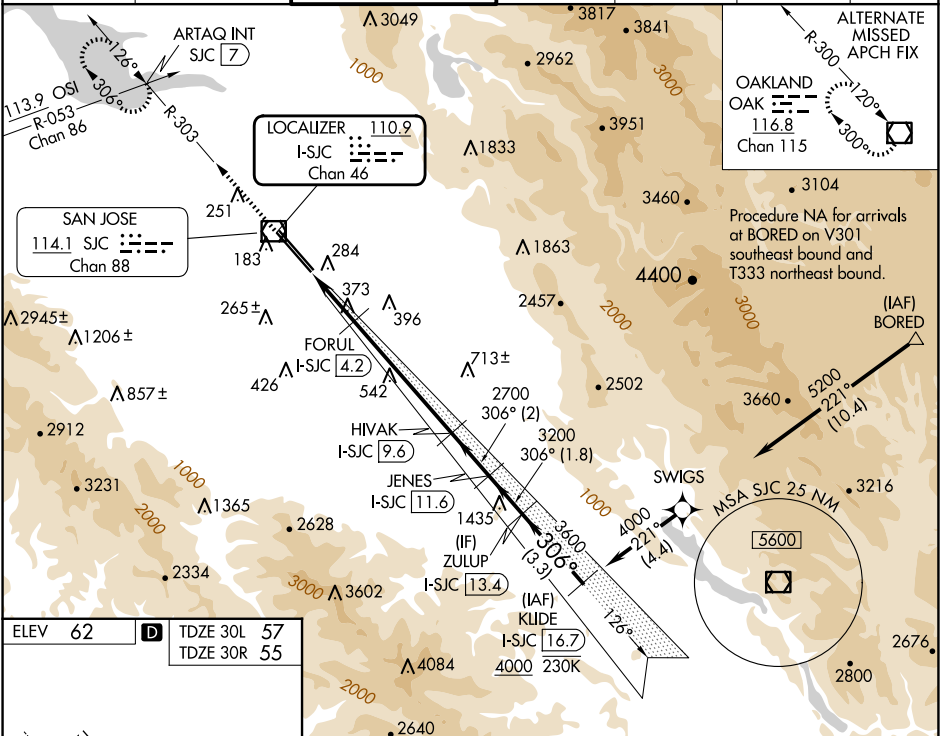
RNAV 1-GPS or RADAR required for procedure entry. DME required.
From BORED: RNAV 1-GPS required.



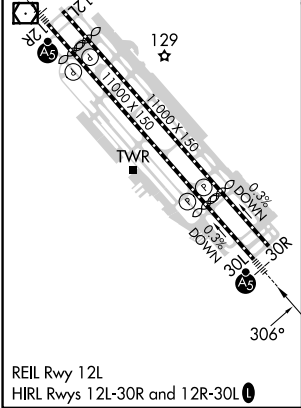
MISSED APPROACH: Climb to 1900 on SJC
VOR/DME R-303 to ARTAQ INT/SJC 7 DME
and hold.

RVR 1800 authorized with use of FD or AP or HUD to DA.

D-ATIS 126.95	NORCAL APP CON 120.1 290.25	SAN JOSE TOWER * 124.0 (CTAF) 0 257.6	GND CON 121.7	CLNC DEL 118.0	CPDLC	UNICOM 122.95
-------------------------	---------------------------------------	-------------------------------------------------	-------------------------	--------------------------	-------	-------------------------



ELEV 62	TDZE 30L 57
	TDZE 30R 55



<div>1900 ↑ SJC R-303 *LOC only</div>		<div>ARTAQ INT</div>	<div>VGSI and ILS glidepath not coincident (VGSI Angle 3.00/TCH 70).</div>				<div>KLIDE I-SJC 16.7</div>
<div>I-SJC 1.4</div>		<div>*I-SJC 3</div>	<div>FORUL I-SJC 4.2</div>	<div>HIVAK I-SJC 9.6</div>	<div>JENES I-SJC 11.6</div>	<div>ZULUP I-SJC 13.4</div>	
<div>1.6 NM</div>		<div>1.2 NM</div>	<div>5.3 NM</div>		<div>2 NM</div>	<div>1.8 NM</div>	<div>3.3 NM</div>
<div>1000*</div>		<div>2700</div>		<div>3200</div>	<div>3600</div>	<div>4000</div>	
<div>GS 3.00° TCH 54</div>		<div>306°</div>					
CATEGORY		A		B	C		D
S-ILS 30L#		257/24 200 (200-½)					
S-LOC 30L		640/24 583 (600-½)			640-1¼ 583 (600-1¼)		
SIDESTEP 30R		640-1 585 (600-1)			640-1¾ 585 (600-1¾)		640-2 585 (600-2)

SW-2, 10 JUL 2025 to 07 AUG 2025

SW-2, 10 JUL 2025 to 07 AUG 2025