

LOC/DME I-SJC	APP CRS	Rwy Idg
110.9	306°	7614
Chan 46		TDZE 57
		Apt Elev 62

ILS RWY 30L (SA CAT I & II)

NORMAN Y MINETA SAN JOSE INTL (SJC)

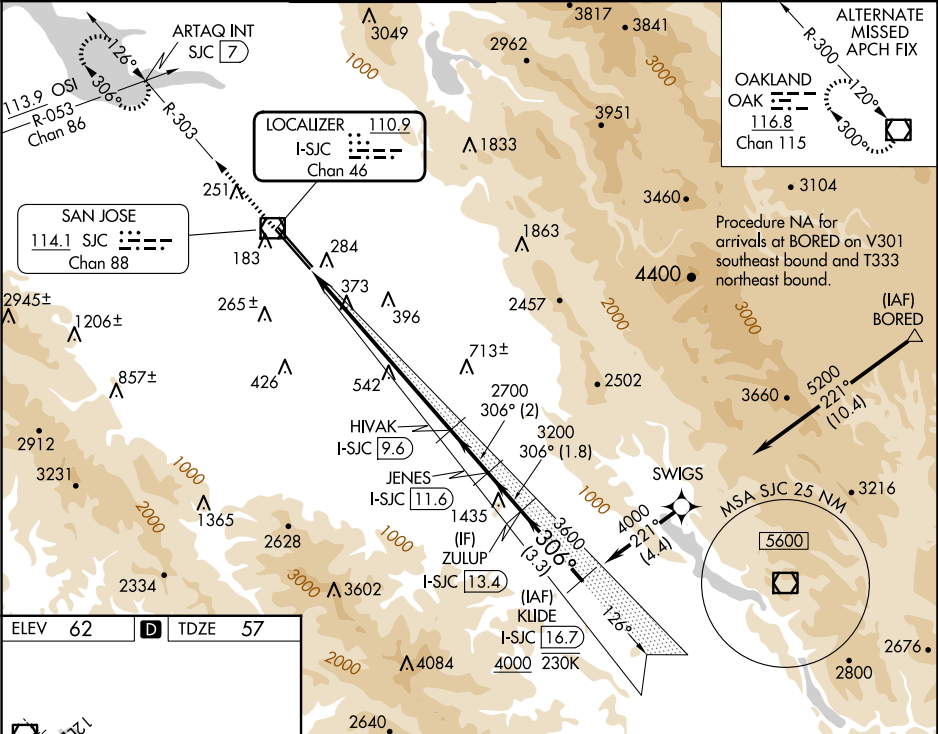
RNAV 1-GPS or RADAR required for procedure entry. DME required.
From BORED: RNAV 1-GPS required.

MALSR

MISSED APPROACH: Climb to 1900 on SJC VOR/DME R-303 to ARTAQ INT/SJC 7 DME and hold.

SA CAT I: Requires specific OPSPEC, MSPEC, or LOA approval and use of HUD to DH.
SA CAT II: Reduced lighting: requires specific OPSPEC, MSPEC, or LOA approval and use of autoland or HUD to touchdown. SA CAT I/II: Procedure NA when tower closed.

D-ATIS	NORCAL APP CON	SAN JOSE TOWER★	GND CON	CLNC DEL	CPDLC	UNICOM
126.95	120.1 290.25	124.0 (CTAF) 257.6	121.7	118.0		122.95



ELEV 62 D TDZE 57

REIL Rwy 12L
HIRL Rwy 12L-30R and 12R-30L

VGSI and ILS glidepath not coincident (VGSI Angle 3.00°/TCH 70°).

ARTAQ INT

HIVAK I-SJC 9.6

JENES I-SJC 11.6

ZULUP I-SJC 13.4

KLIDE I-SJC 16.7

GS 3.00° TCH 54

CATEGORY	A	B	C	D
S-ILS 30L	SA CAT I	RA 147/14	150	DA 207
S-ILS 30L	SA CAT II	RA 97/12	100	DA 157

SA CATEGORY I & II ILS - SPECIAL AIRCREW & AIRCRAFT CERTIFICATION REQUIRED