

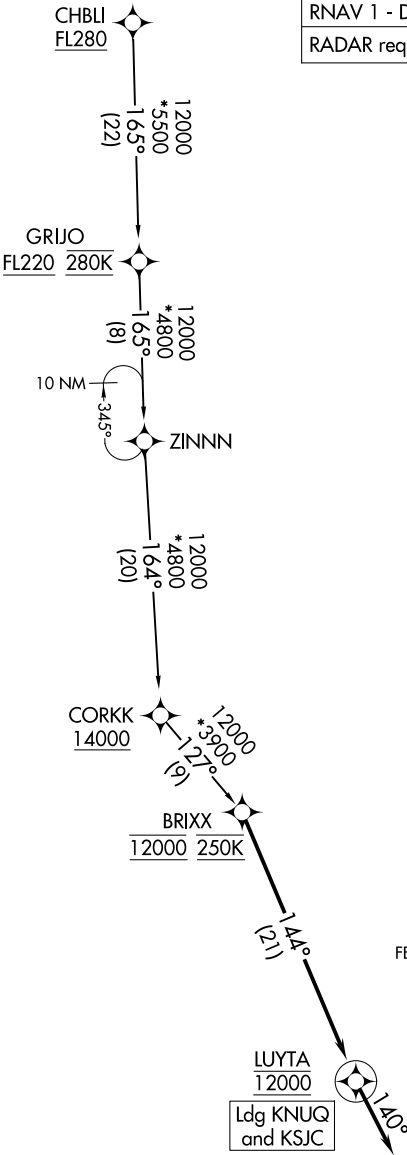
BR1XX FUR ARRIVAL (RNAV)

AL-693 (FAA)

SAN JOSE, CALIFORNIA

OAKLAND CENTER
125.85 323.0
NORCAL APP CON
133.95 317.6
NUQ ATIS
124.175 283.0
SJC D-ATIS
126.95
NUQ GND CON
121.85 278.95
SJC GND CON
121.7
MOFFETT TOWER*
119.55 259.65
SAN JOSE TOWER*
124.0 257.6

RNAV 1 - DME/DME/IRU or GPS.
RADAR required.



NOTE: Chart not to scale.

ARRIVAL ROUTE DESCRIPTION

CHBLI TRANSITION (CHBLI.BR1XX4)

LANDING KSJC/KNUQ: From BR1XX on track 144° to cross LUYTA at 12000, then on track 140°. Expect RADAR vectors to final approach course.

BR1XX FUR ARRIVAL (RNAV)

SAN JOSE, CALIFORNIA