

RNP APCH.

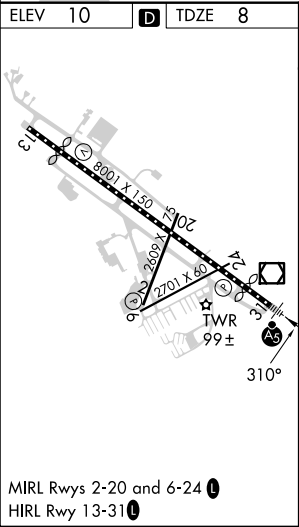
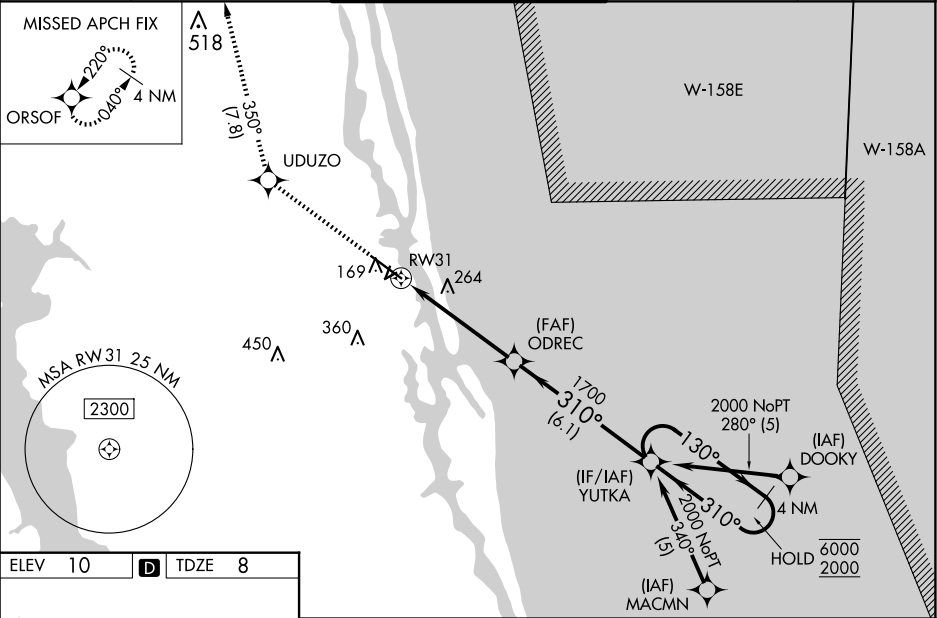
⚠

Circling Rwy 2, 6 NA at night. For uncompensated Baro-VNAV systems, LNAV/VNAV NA below -18°C or above 54°C. For inop ALS, increase LNAV/VNAV all Cats visibility to ¾ SM and LNAV Cat C/D visibility to 1¾ SM.

MALS R

MISSED APPROACH: Climb to 2000 direct UDUZO and on track 350° to ORSOF and hold.

ATIS 119.625	JACKSONVILLE APP CON 120.75	ST AUGUSTINE TOWER ★ 127.625 (CTAF) 269.475	GND CON 121.175 251.125	UNICOM 122.95
-----------------	--------------------------------	--	----------------------------	------------------



2000	UDUZO	fr 350°	ORSOF	
*LNAV only.				
<p>YUTKA 4 NM Holding Pattern 130° 6000 2000 310°</p> <p>ODREC 1700 310° 1700</p> <p>RW31 1.4 NM 3.8 NM 6.1 NM</p> <p>GP 3.00° TCH 54</p>				
CATEGORY	A	B	C	D
LPV DA	218-½		210 (300-½)	
LNAV/VNAV DA	292-½		284 (300-½)	
LNAV MDA	520-½ 512 (600-½)		520-1 512 (600-1)	
CIRCLING	520-1 510 (600-1)	580-1 570 (600-1)	680-1¾ 670 (700-1¾)	780-2½ 770 (800-2½)