

WAAS CH 77711 W13A	APP CRS 130°	Rwy Idg TDZE 10 Apt Elev 10	6144
--	------------------------	---	-------------

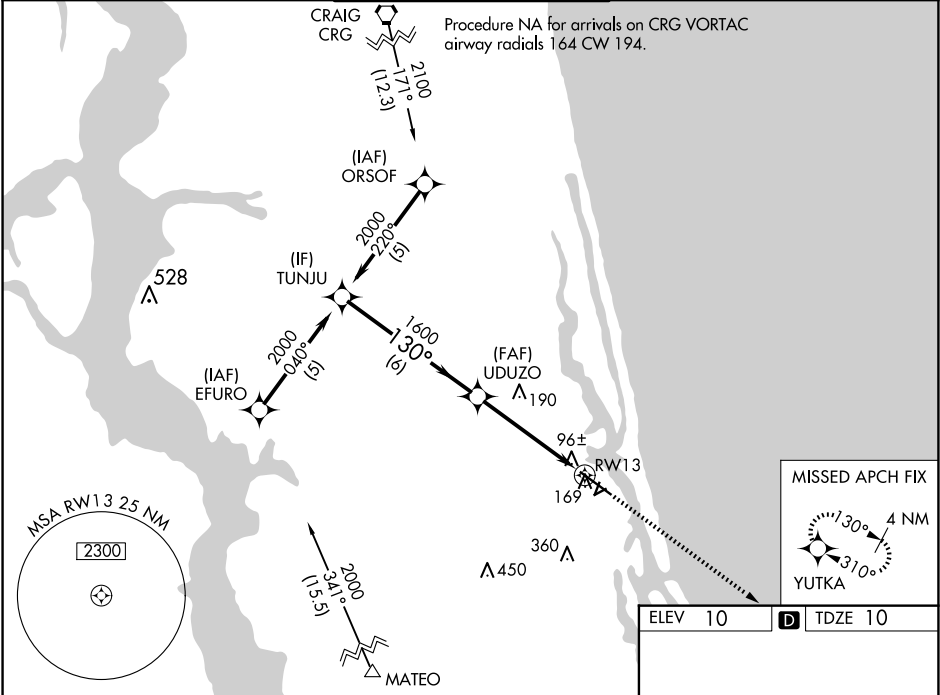
RNAV (GPS) RWY 13
NORTHEAST FLORIDA RGNL (SGJ)

RNP APCH

▼ Baro-VNAV NA when using Jacksonville NAS (Towers Fld) altimeter setting. For uncompensated Baro-VNAV systems, LNAV/VNAV NA below -15°C (5°F) or above 54°C (130°F). Rwy 13 helicopter visibility reduction below ¾ SM NA. When local altimeter setting not received, use Jacksonville NAS (Towers Fld) altimeter setting; increase all DA 57 feet and all MDA 60 feet. Increase LPV and LNAV/VNAV all Cats, LNAV Cat C and Circling Cat C/D visibility ½ SM. Circling Rwy 2, 6 NA at night.

MISSED APPROACH: Climb to 2000 direct YUTKA and hold.

ATIS 119.625	JACKSONVILLE APP CON 120.75	ST AUGUSTINE TOWER ★ 127.625 (CTAF) 269.475	GND CON 121.175 251.125	UNICOM 122.95
------------------------	---------------------------------------	---	-----------------------------------	-------------------------



Procedure Turn NA

GP 3.00° TCH 58

2000

130°

1600

6 NM

4.8 NM

UDUZO

RWY 13

YUTKA

2000

VGSI and RNAV glidepath not coincident (VGSI Angle 3.00/TCH 44).

CATEGORY	A	B	C	D
LPV DA		357-1¼	347 (400-1¼)	
LNAV/ VNAV DA		391-1¼	381 (400-1¼)	
LNAV MDA	460-1	450 (500-1)	460-1¼ 450 (500-1¼)	460-1½ 450 (500-1½)
CIRCLING	520-1 510 (600-1)	580-1 570 (600-1)	660-1¾ 650 (700-1¾)	780-2½ 770 (800-2½)

MIRL Rwy 2-20 and 6-24

HIRL Rwy 13-31

SE-3, 10 JUL 2025 to 07 AUG 2025

SE-3, 10 JUL 2025 to 07 AUG 2025