

VOR/DME RIW <b>114.05</b> Chan <b>87(Y)</b>	APP CRS <b>293°</b>	Rwy Idg TDZE Apt Elev	<b>8204</b> <b>5459</b> <b>5516</b>
---------------------------------------------------	------------------------	-----------------------------	-------------------------------------------

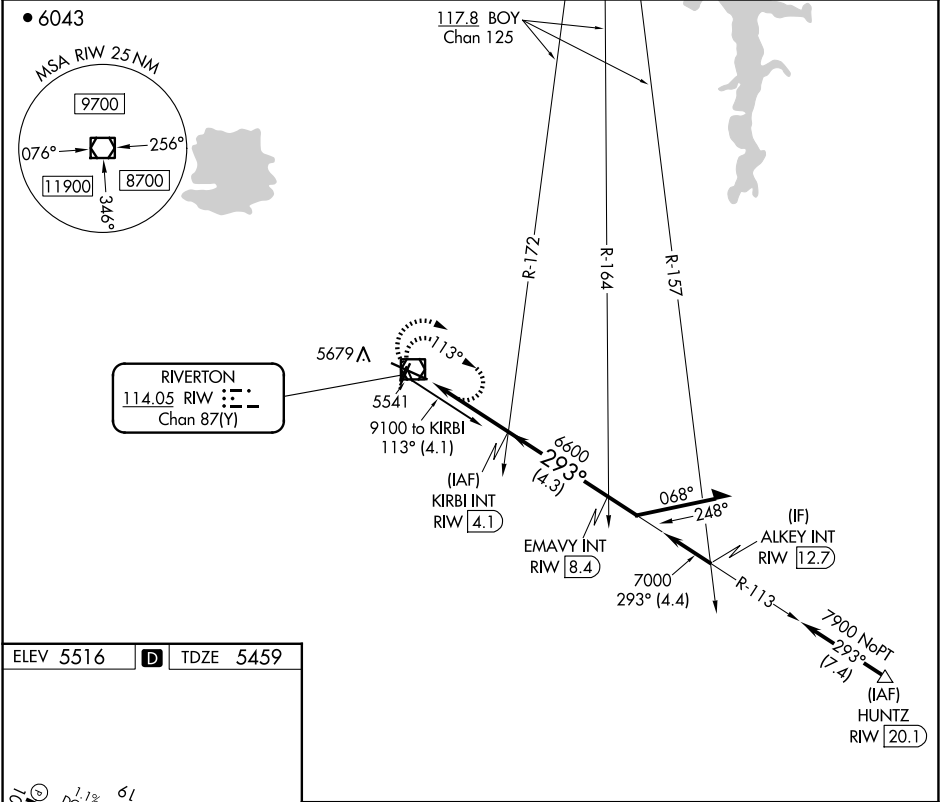
VOR RWY 28  
CENTRAL WYOMING RGNL (RIW)

**⚠** When local altimeter setting not received, use Lander altimeter setting and increase all MDA 60 feet. VDP NA when using Lander altimeter setting. For inop MALSRL, increase S-28 Cat C and D visibility to 1½ miles.

**MALSRL**

**MISSED APPROACH:** Climb to 7700 in RIW VOR/DME holding pattern.

ASOS <b>121.425</b>	SALT LAKE CENTER <b>133.25 285.6</b>	UNICOM <b>122.8 (CTAF)</b> <b>0</b>
------------------------	-----------------------------------------	----------------------------------------



ELEV 5516 **D** TDZE 5459

11

1.1% DOWN

61

0.7% UP

5513



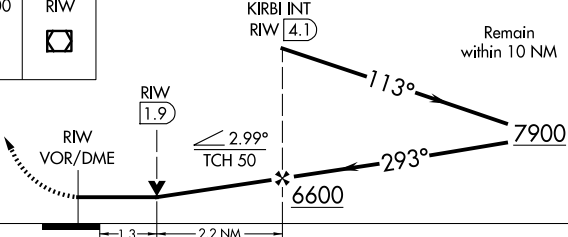

AS

293°

REIL Rwy 1, 10 and 19 **0**

MIRL Rwy 1-19 **0**

HIRL Rwy 10-28 **0**

7700	RIW	KIRBI INT RIW 4.1				Remain within 10 NM	
							
RIW VOR/DME		RIW 1.9		2.99° TCH 50		7900	
		1.3		2.2 NM		6600	
CATEGORY	A		B		C		D
S-28	5920-½		461 (500-½)		5920-1		461 (500-1)
 CIRCLING	6000-1		484 (500-1)		6000-1½ 484 (500-1½)		6120-2 604 (700-2)

NW-1, 10 JUL 2025 to 07 AUG 2025

NW-1, 10 JUL 2025 to 07 AUG 2025