

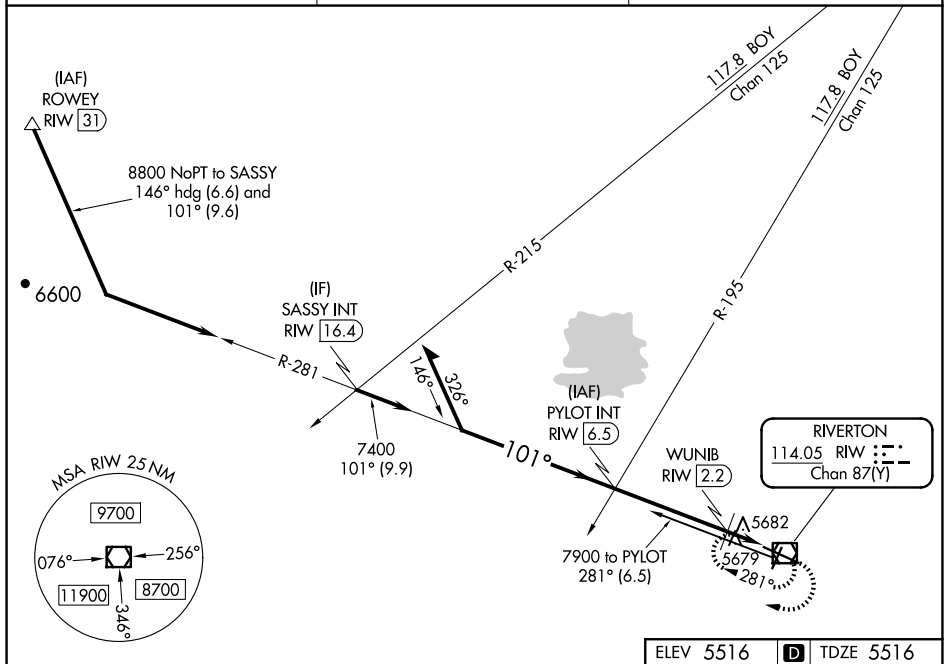
VOR/DME RIW 114.05 Chan 87(Y)	APP CRS 101°	Rwy Idg 8204 TDZE 5516 Apt Elev 5516
---	------------------------	---

VOR RWY 10
CENTRAL WYOMING RGNL (RIW)

T When local altimeter setting not received, use Lander altimeter setting and increase all MDA 60 feet and increase S-10 Cat C and D visibility $\frac{1}{4}$ mile and Circling Cat C visibility $\frac{1}{8}$ mile, increase WUNIB fix minimums Cat C and D visibility $\frac{1}{8}$ mile. Rwy 10 helicopter visibility reduction below $\frac{3}{4}$ SM NA.

MISSED APPROACH: Climb to 7900 in RIW VOR/DME holding pattern.

ASOS 121,425	SALT LAKE CENTER 133.25 285.6	UNICOM 122.8 (CTAF) ①
------------------------	---	---------------------------------



NW-1, 10 JUL 2025 to 07 AUG 2025

[illegible]

RIVERTON, WYOMING
Amdt 10B 12OCT17

CENTRAL WYOMING RGNL (RIW)
VOR RWY 10

43°04'N-108°28'W