

LOC I-RIW <u>110.5</u>	APP CRS 284°	Rwy Idg TDZE Apt Elev	8204 5459 5516
----------------------------------	------------------------	-----------------------------	---

ILS or LOC RWY 28
CENTRAL WYOMING RGNL (RIW)

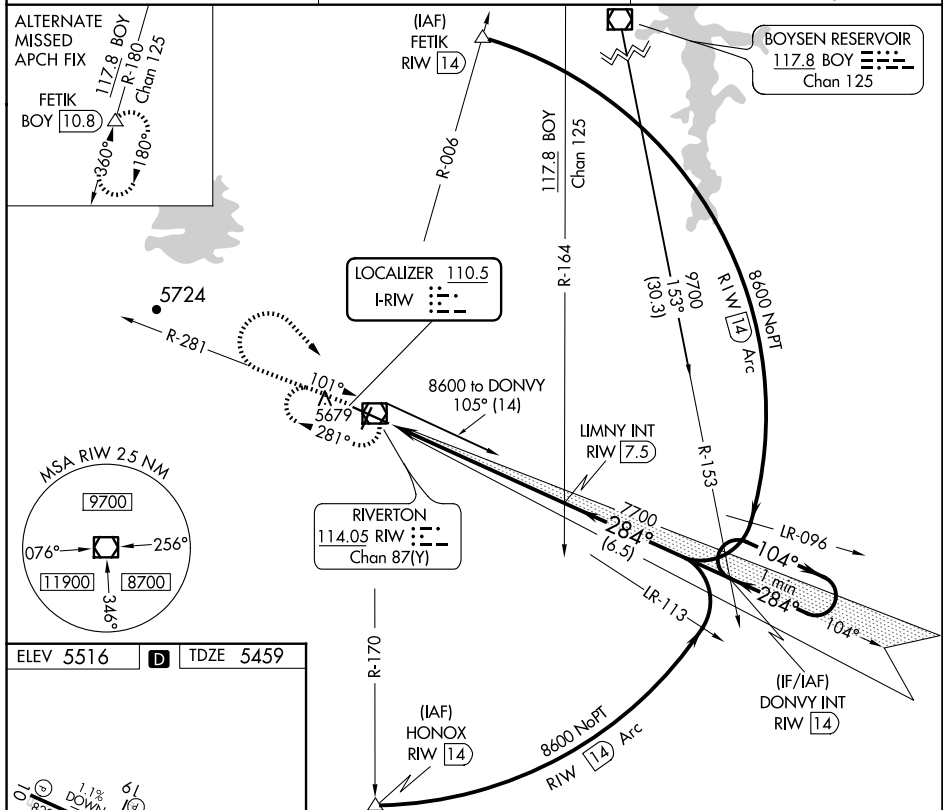
T When local altimeter setting not received, use Lander altimeter setting: increase
A **NA** DA to 5713 feet; increase all MDA 60 feet and S-LOC 28 Cat C and D visibility
 ¼ mile. For Inop MALSR, when using Lander altimeter setting, increase S-HLS 28
 all Cts visibility to ¾ mile and S-LOC 28 Cat C and D visibility to 1¾ mile.
 VDP NA when using Lander altimeter setting.

MALSR



MISSED APPROACH: Climb to 6800 then climbing right turn to 7700 direct RIW VOR/DME and hold, continue climb-in-hold to 7700.

ASOS 121.425	SALT LAKE CENTER 133.25 285.6	UNICOM 122.8 (CTAF) 0
------------------------	---	---------------------------------



NW-1, 10 JUL 2025 to 07 AUG 2025