

VOR/DME FAY
114.85
Chan **95(Y)**

APP CRS
058°

Rwy Idg
TDZE **189**
Apt Elev **189**

VOR RWY 4

FAYETTEVILLE RGNL/GRANNIS FLD (FAY)

DME required.

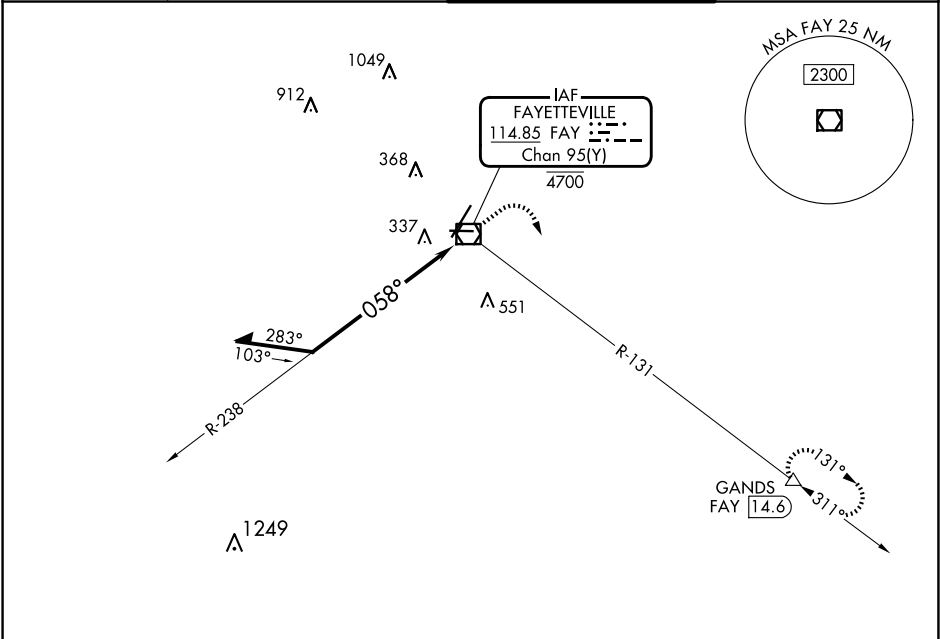
▼ Rwy 4 helicopter visibility reduction below RVR 4000 NA.

▲ For inop ALS, increase S-4 Cats A/B visibility to RVR 5500.

MALSR

MISSED APPROACH: Climb to 1100 then climbing right turn to 3000 on FAY VOR/DME R-131 to GANDS/FAY 14.6 DME and hold.

ATIS 121.25	FAYETTEVILLE APP CON 133.0 290.25	FAYETTEVILLE TOWER 118.3 269.2	GND CON 121.7 348.6
-----------------------	---	--	-------------------------------



ALTERNATE MISSED APCH FIX

FAYETTEVILLE
114.85 FAY
Chan 95(Y)

270° R-090°

Remain within 10 NM

FAY VOR/DME
4700

2100

238°

058°

FAY 1.9

1.5 NM 0.4

1100

3000

GANDS

FAY R-131

CATEGORY	A	B	C	D
S-4	720/40 531 (600-¾)		720/55 531 (600-1)	
CIRCLING	720-1 531 (600-1)		860-2 671 (700-2)	860-2¼ 671 (700-2¼)

ELEV 189

TDZE 189

TWR 252

01

28

770° X 150

4801 X 150

058°

HIRL Rwy 4-22

MIRL Rwy 10-28

REIL Rws 10, 22, and 28