

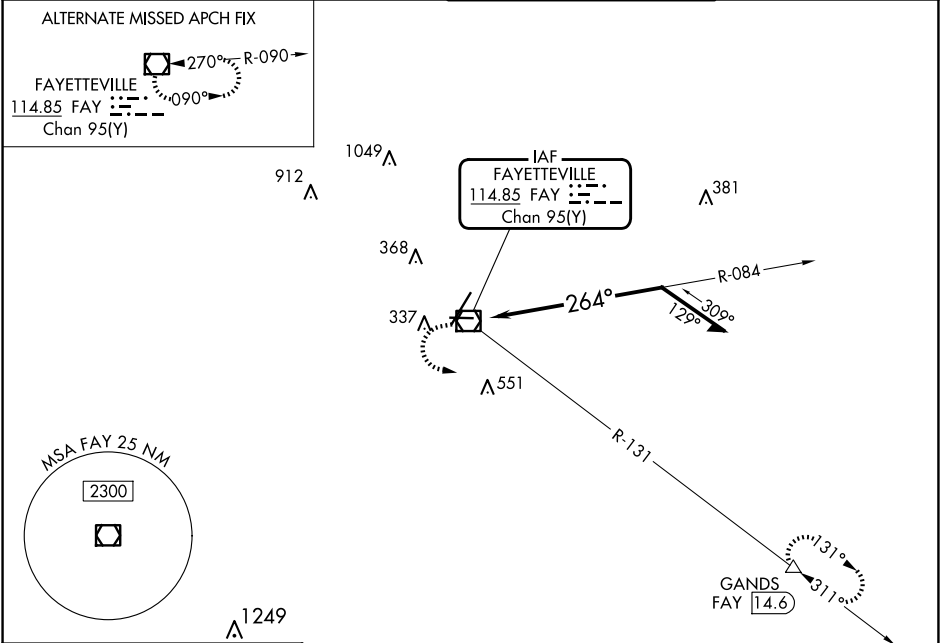
VOR/DME FAY <b>114.85</b> Chan <b>95</b> (Y)	APP CRS <b>264°</b>	Rwy Idg TDZE <b>188</b> Apt Elev <b>189</b>	<b>4801</b>
--	------------------------	---	-------------

VOR RWY 28

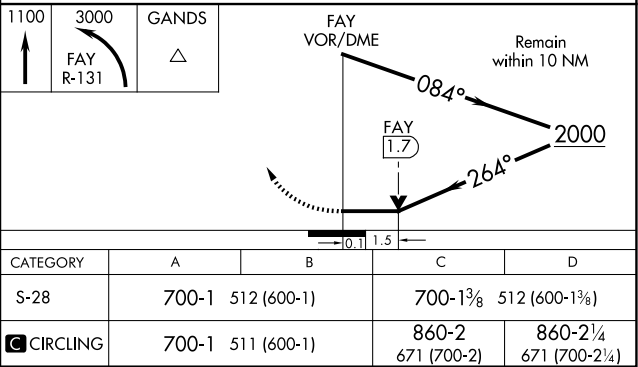
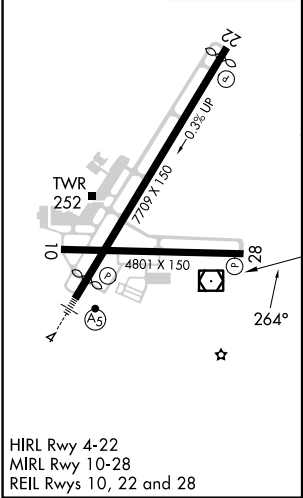
FAYETTEVILLE RGNL/GRANNIS FLD (FAY)

DME required.	MISSED APPROACH: Climb to 1100 then climbing left turn to 3000 on FAY VOR/DME R-131 to GANDS/FAY 14.6 DME and hold.
---------------	---

ATIS <b>121.25</b>	FAYETTEVILLE APP CON <b>133.0 290.25</b>	FAYETTEVILLE TOWER <b>118.3 269.2</b>	GND CON <b>121.7 348.6</b>
-----------------------	---	--	-------------------------------



ELEV <b>189</b>	<b>D</b>	TDZE <b>188</b>
-----------------	----------	-----------------



SE-2, 10 JUL 2025 to 07 AUG 2025

SE-2, 10 JUL 2025 to 07 AUG 2025