

FAYETTEVILLE, NORTH CAROLINA

AL-690 (FAA)

24081

VOR/DME FAY 114.85 Chan 95 (Y)	APP CRS 198°	Rwy Idg 6413 TDZE 180 Apt Elev 189
--	------------------------	---

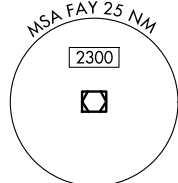
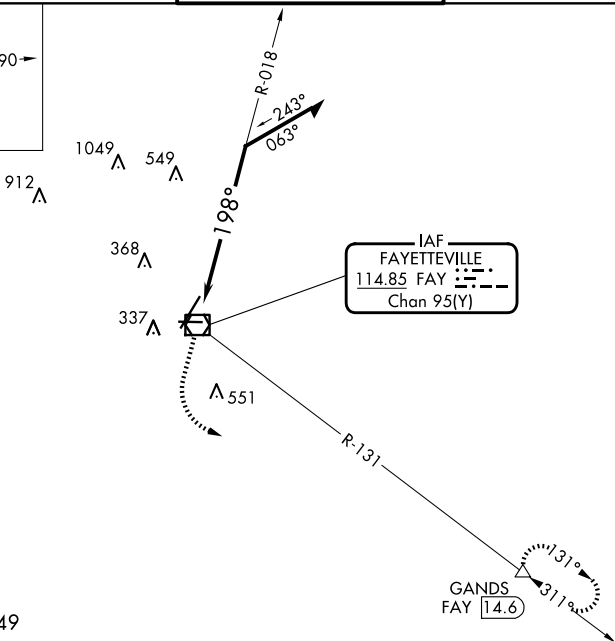
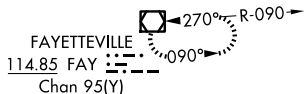
VOR RWY 22
FAYETTEVILLE RGNL/GRANNIS FLD (FAY)

DME required.

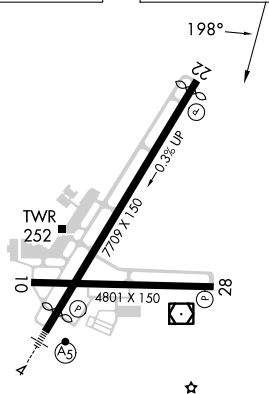
MISSED APPROACH: Climb to 1300 then climbing left turn to 3000 on heading 100° and on FAY VOR/DME R-131 to GANDS/FAY 14.6 DME and hold.

ATIS 121.25	FAYETTEVILLE APP CON 133.0 290.25	FAYETTEVILLE TOWER 118.3 269.2	GND CON 121.7 348.6
----------------	--------------------------------------	-----------------------------------	------------------------

ALTERNATE MISSED APCH FIX



ELEV 189	D	TDZE 180
----------	----------	----------



HIRL Rwy 4-22
MIRL Rwy 10-28
REIL Rwy 10-28 and 22

1300	3000 hdg 100°	FAY R-131	GANDS △	
<p>Remain within 10 NM</p> <p>FAY VOR/DME</p> <p>018°</p> <p>2100</p> <p>198°</p> <p>FAY 3.1</p> <p>0.9 2.2</p>				
CATEGORY	A	B	C	D
S-22	900-1	720 (800-1)	900-2	720 (800-2)
C CIRCLING	900-1	711 (800-1)	900-2 711 (800-2)	900-2 ¹ / ₄ 711 (800-2 ¹ / ₄)

FAYETTEVILLE, NORTH CAROLINA

Amdt 8 14JUL22

FAYETTEVILLE RGNL/GRANNIS FLD (FAY)

34°59'N-78°53'W

VOR RWY 22

SE-2, 10 JUL 2025 to 07 AUG 2025

SE-2, 10 JUL 2025 to 07 AUG 2025