

APP CRS
278°

Rwy Idg
TDZE
Apt Elev

4801
188
189

RNAV (GPS) RWY 28

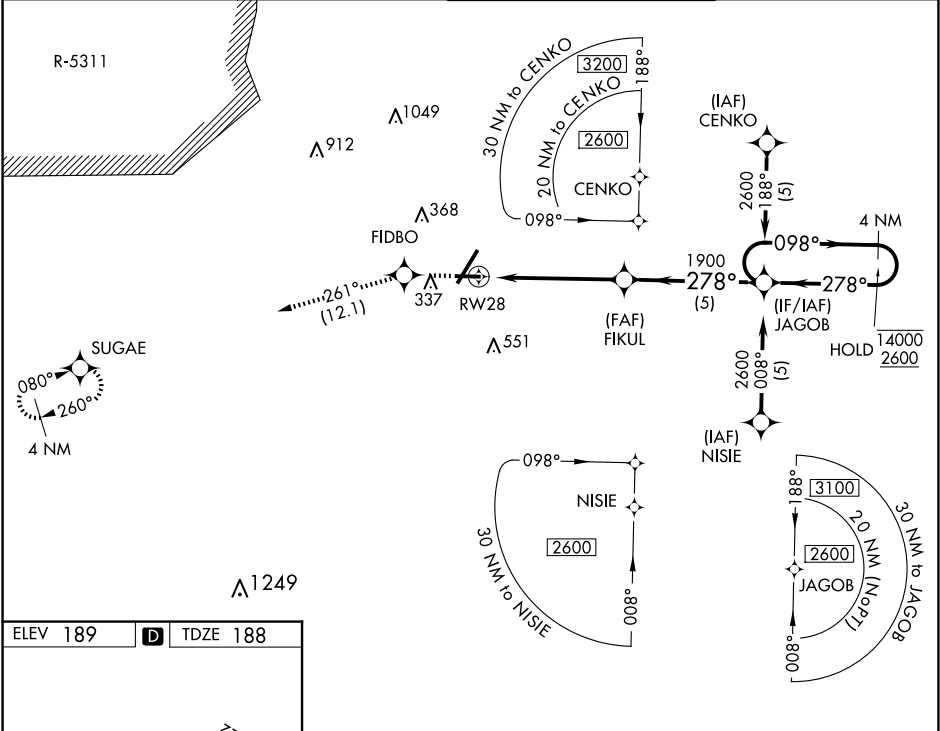
FAYETTEVILLE RGNL/GRANNIS FLD (FAY)

RNP APCH.

For uncompensated Baro-VNAV systems, LNAV/VNAV NA below -10° C or above 54°C.

MISSED APPROACH: Climb to 2600 direct FIDBO and on 261° track to SUGAE and hold.

ATIS 121.25	FAYETTEVILLE APP CON 133.0 290.25	FAYETTEVILLE TOWER 118.3 269.2	GND CON 121.7 348.6
-----------------------	---	--	-------------------------------



ELEV 189 TDZE 188

TWR 252

MIRL Rwy 10-28

REIL Rwy 10, 28 and 22

4801 X 150

278° to RWY 28

2600

FIDBO

tr 261°

SUGAE

*LNAV only.

*1.2 NM to RWY 28

RWY 28

FIKUL 1900

JAGOB

4 NM Holding Pattern

1.2

4 NM

5 NM

GP 3.00° TCH 35

CATEGORY	A	B	C	D
LNAV/VNAV DA	500-1¼ 312 (400-1¼)			
LNAV MDA	600-1 412 (500-1)		600-1¼ 412 (500-1¼)	
CIRCLING	640-1¼ 451 (500-1¼)	660-1¼ 471 (500-1¼)	860-2 671 (700-2)	860-2¼ 671 (700-2¼)