

VOR/DME RDD	APP CRS	Rwy Idg	6997
114.35	355°	TDZE	499
Chan 90(Y)		Apt Elev	505

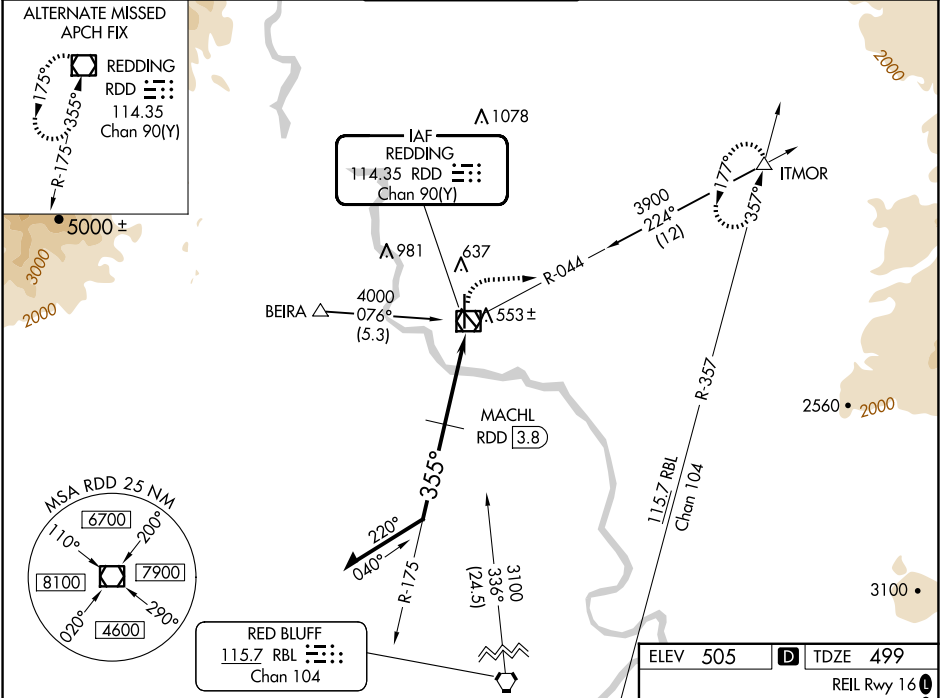
VOR RWY 34
REDDING RGNL (RDD)

⚠ Inop table does not apply to S-34 Cats C/D. MACHL fix minimums: for inop ALS, increase S-34 Cat C/D visibility to 1¾ SM.

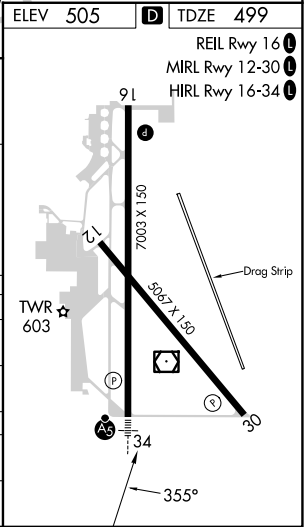
MALSR

MISSED APPROACH: Climb to 2100 then climbing right turn to 5300 on heading 090° and on RDD VOR/DME R-044 to ITMOR INT and hold, continue climb-in-hold to 5300.

ATIS 124.1	OAKLAND CENTER 132.2 350.3	REDDING TOWER ★ 119.8(CTAF) 0 269.25	GND CON 121.7	UNICOM 122.95
---------------	-------------------------------	-----------------------------------------	------------------	------------------



<p>Remain within 10 NM</p> <p>2600 175° 355° 1680</p> <p>MACHL RDD 3.8 RDD 2 3.02° TCH 55</p> <p>1.8 NM 1.7</p>				
<p>2100 5300 RDD ITMOR</p> <p>↑ hdg R-044</p> <p>090°</p>				
CATEGORY	A	B	C	D
S-34	1680-¾ 1181 (1200-¾)	1680-1 1181 (1200-1)	1680-3	1181 (1200-3)
CIRCLING	1680-1¼ 1175 (1200-1¼)	1680-1½ 1175 (1200-1½)	1680-3	1175 (1200-3)
MACHL FIX MINIMUMS				
S-34	1100-½	601 (600-½)	1100-1⅜	601 (600-1⅜)
CIRCLING	1100-1	595 (600-1)	1120-1¾ 615 (700-1¾)	1340-2¾ 835 (900-2¾)



SW-2, 10 JUL 2025 to 07 AUG 2025

SW-2, 10 JUL 2025 to 07 AUG 2025