

WAAS CH 56402 W34A	APP CRS 346°	Rwy Idg TDZE Apt Elev	6997 499 505
--	------------------------	-----------------------------	---

RNAV (GPS) RWY 34
REDDING RGNL (RDD)

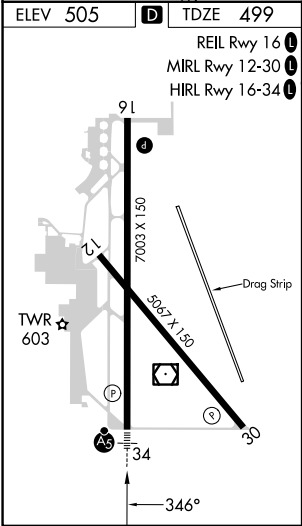
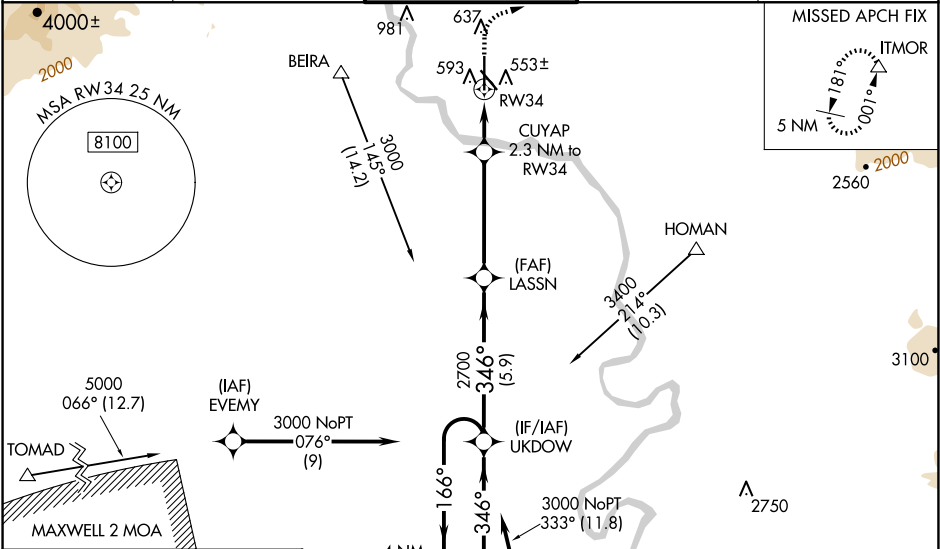
RNP APCH.

⚠ For uncompensated Baro-VNAV systems, LNAV/VNAV NA below -4°C or above 54°C. For inop ALS, increase LNAV/VNAV all Cats visibility to ¾ SM and LNAV Cat C, D visibility to 1 SM.

MALSR

MISSED APPROACH: Climb to 1700 then climbing right turn to 5000 direct ITMOR, continue climb-in-hold to 5000.

ATIS 124.1	OAKLAND CENTER 132.2 350.3	REDDING TOWER ★ 119.8(CTAF) 0 269.25	GND CON 121.7	UNICOM 122.95
----------------------	--------------------------------------	--	-------------------------	-------------------------



VGSI and RNAV glidepath not coincident (VGSI Angle 3.00/TCH 55).				
4 NM Holding Pattern				
UKDOW				
6000 ← 166° 3000 → 346° 2700 346° 2700 1260 1700 5000 ITMOR				
GP 3.00° TCH 52				
5.9 NM 4.5 NM 1.3 NM 1 NM				
CATEGORY	A	B	C	D
LPV DA	699-½		200 (200-½)	
LNAV/VNAV DA	754-½		255 (300-½)	
LNAV MDA	860-½ 361 (400-½)		860-⅝ 361 (400-⅝)	
CIRCLING	940-1 435 (500-1)	1000-1 495 (500-1)	1120-1¾ 615 (700-1¾)	1340-2¾ 835 (900-2¾)

SW-2, 10 JUL 2025 to 07 AUG 2025

SW-2, 10 JUL 2025 to 07 AUG 2025