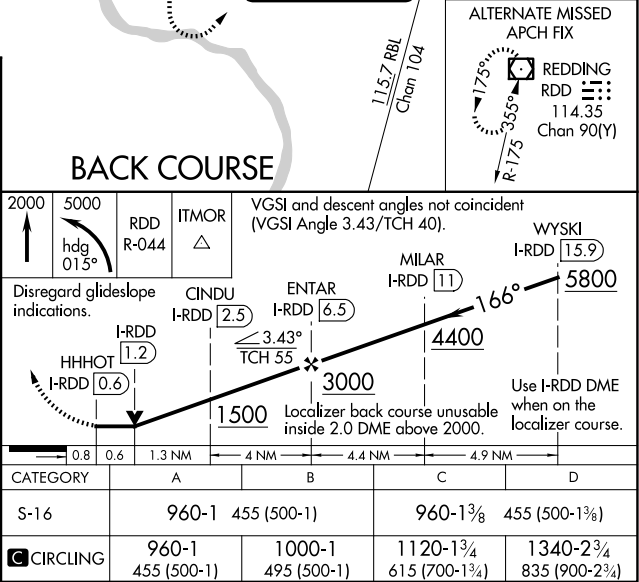
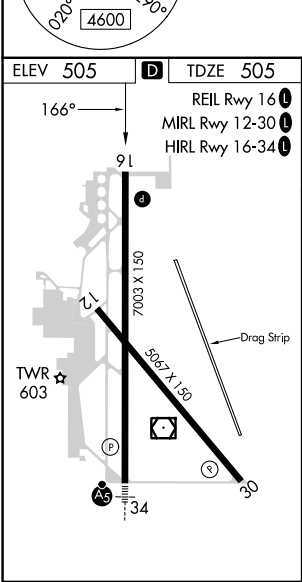
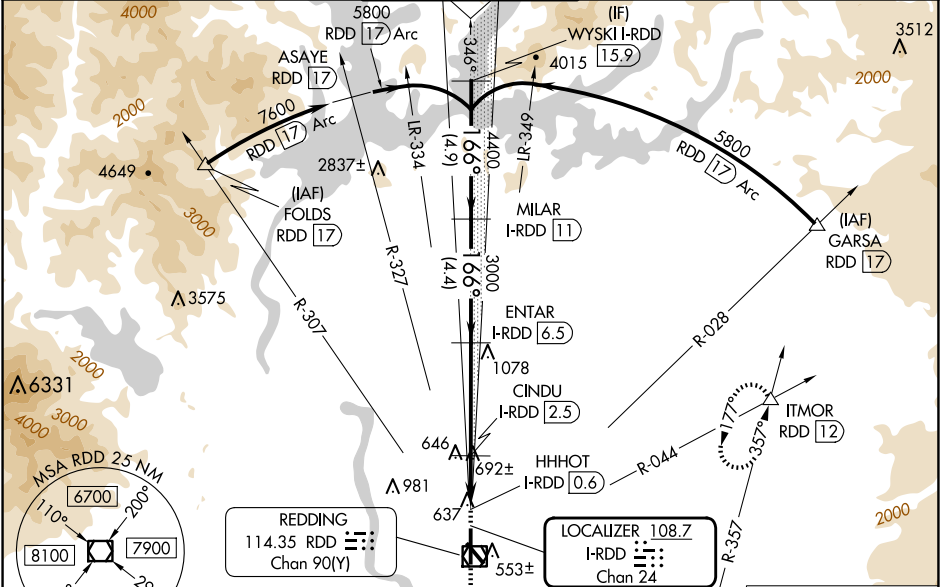


LOC/DME I-RDD <b>108.7</b> Chan 24	APP CRS <b>166°</b>	Rwy Idg TDZE Apt Elev	<b>6997</b> <b>505</b> <b>505</b>
--	------------------------	-----------------------------	---

LOC BC RWY 16  
REDDING RGNL (RDD)

DME required.	MISSED APPROACH: Climb to 2000 then climbing left turn to 5000 on heading 015° and RDD VOR/DME R-044 to ITMOR INT/RDD 12 DME and hold, continue climb-in-hold to 5000.
▼ ▲ Rwy 16 helicopter visibility reduction below ¾ SM NA.	

ATIS <b>124.1</b>	OAKLAND CENTER <b>132.2 350.3</b>	REDDING TOWER ★ <b>119.8(CTAF) 0 269.25</b>	GND CON <b>121.7</b>	UNICOM <b>122.95</b>
----------------------	--------------------------------------	--	-------------------------	-------------------------



SW-2, 10 JUL 2025 to 07 AUG 2025

SW-2, 10 JUL 2025 to 07 AUG 2025