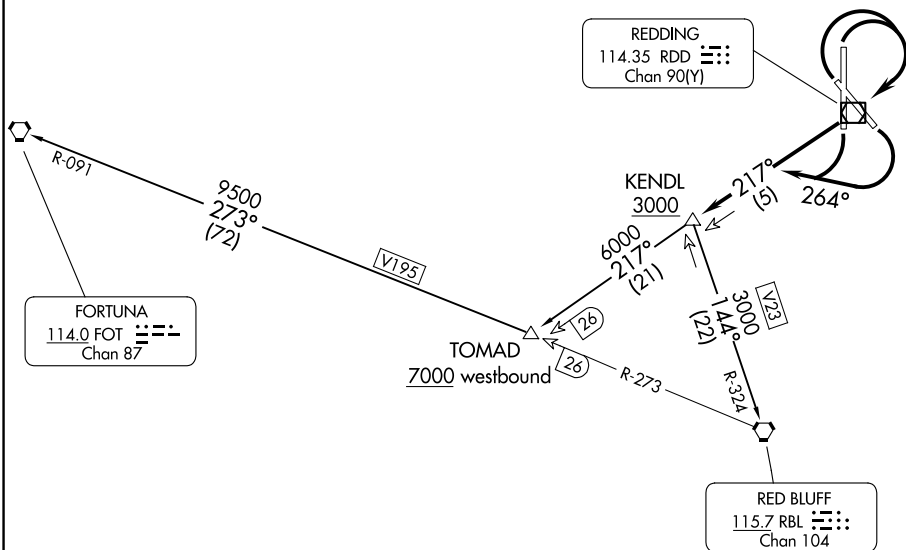


KENDL FOUR DEPARTURE

REDDING RGNL (RDD)
REDDING, CALIFORNIA

OAKLAND CENTER
132.2 350.3
ATIS
124.1
REDDING TOWER★
119.8 269.25

**TOP ALTITUDE:
ASSIGNED BY ATC**



Rwys 12: Standard with minimum climb of 410' per NM to 3000.
Rwy 16: Standard with minimum climb of 495' per NM to 3000.
Rwy 30: Standard with minimum climb of 440' per NM to 3000.
Rwy 34: Standard with minimum climb of 410' per NM to 3000.

NOTE: Chart not to scale

TAKEOFF RUNWAYS 12 and 16: Climbing right turn heading 264° to intercept RDD VOR/DME R-217 to KENDL, cross KENDL at or above 3000, thence . . .

TAKEOFF RUNWAYS 30 and 34: Climbing right turn direct RDD VOR/DME then on RDD VOR/DME R-217 to KENDL, cross KENDL at or above 3000, thence . . .

... via (transition) or (assigned route) maintain ATC assigned altitude.

FORTUNA TRANSITION (KENDL4.FOT): From over KENDL on RDD R-217 to TOMAD, thence on RBL R-273 and FOT R-091 to FOT VORTAC.

RED BLUFF TRANSITION (KENDL4.RBL): From over KENDL on RBL R-324 to RBL VORTAC.

TOMAD TRANSITION (KENDL4.TOMAD): From over KENDL on RDD R-217 to TOMAD.

KENDL FOUR DEPARTURE

(KENDL4.KENDL) 30JAN20

REDDING, CALIFORNIA
REDDING RGNL (RDD)

SW-2, 10 JUL 2025 to 07 AUG 2025