

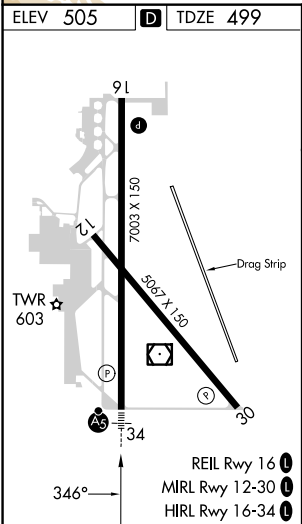
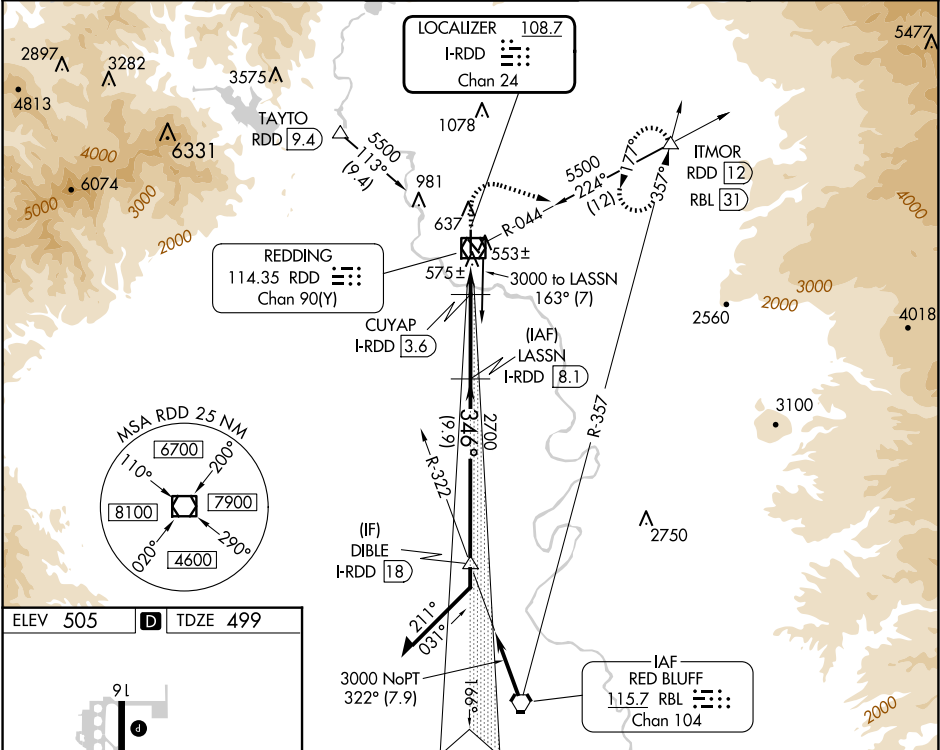


LOC/DME I-RDD	APP CRS	Rwy Idg	6997
108.7	346°	TDZE	499
Chan 24		Apf Elev	505

ILS or LOC RWY 34
REDDING RGNL (RDD)

DME required for LOC only.		MALSR 	MISSED APPROACH: Climb to 1700 then climbing right turn to 5000 on heading 090° and RDD R-044 to ITMOR INT/RDD 12 DME and hold, continue climb-in-hold to 5000.
	For inop ALS, increase S-ILS 34 Cat E visibility to ¾ SM and S-LOC 34 Cat C/D/E visibility to 1 SM.		

ATIS 124.1	OAKLAND CENTER 132.2 350.3	REDDING TOWER ★ 119.8(CTAF) 0 269.25	GND CON 121.7	UNICOM 122.95
----------------------	--------------------------------------	--	-------------------------	-------------------------



1700	5000	RDD R-044	ITMOR	LASSN I-RDD 8.1	VGSI and ILS glidepath not coincident (VGSI Angle 3.00/TCH 55).	
Use I-RDD DME when on the localizer course.		* LOC only.		2700	166°	3000
CUYAP I-RDD 3.6		DIBLE I-RDD 18		2700	346°	3000
I-RDD 1.3		1260*		2700	GS 3.00° TCH 52	
2.3 NM		4.5 NM		9.9 NM		
CATEGORY	A	B	C	D	E	
S-ILS 34	699-½ 200 (200-½)					
S-LOC 34	840-½	341 (400-½)	840-⅝	341 (400-⅝)		
CIRCLING	940-1	1000-1	1120-1¾	1340-2¾	1340-3	
	435 (500-1)	495 (500-1)	615 (700-1¾)	835 (900-2¾)	835 (900-3)	

SW-2, 10 JUL 2025 to 07 AUG 2025

SW-2, 10 JUL 2025 to 07 AUG 2025