

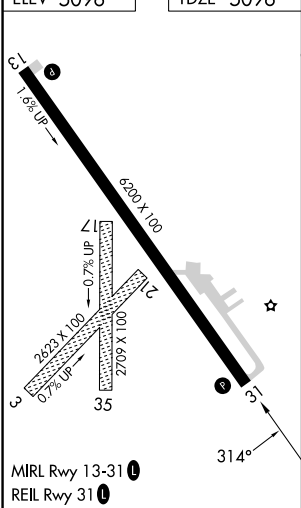
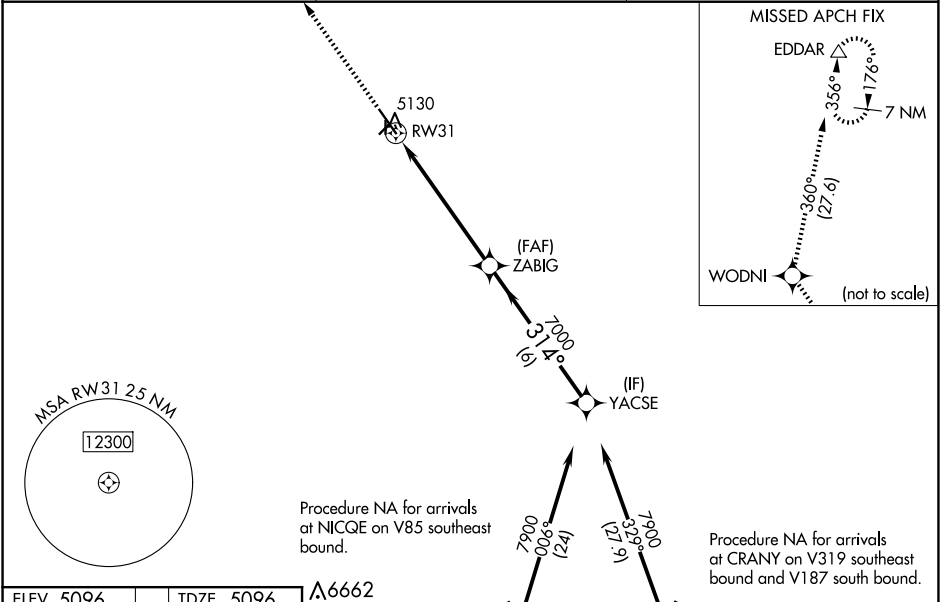
WAAS CH 50233 W31A	APP CRS 314°	Rwy Idg TDZE Apt Elev	6200 5096 5096
--	------------------------	-----------------------------	---






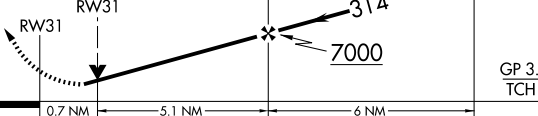

RNAV (GPS) RWY 31

POWELL MUNI (POY)

RNP APCH.	<p>⚠ Circling NA to Rwys 3, 17, 21 and 35. Baro-VNAV and VDP NA when using Cody altimeter setting. Rwy 31 helicopter visibility reduction below $\frac{3}{4}$ SM NA. For uncompensated Baro-VNAV systems, LNAV/VNAV NA below -25°C or above 48°C. When local altimeter setting not received, use Cody altimeter setting and increase all DA 54 feet and all MDA 60 feet.</p>	MISSED APPROACH: Climb to 9500 direct WODNI and on track 360° to EDDAR and hold.
-----------	---	--

AWOS-3 119.275	SALT LAKE CENTER 127.75 351.9	UNICOM 122.7 (CTAF) 0
--------------------------	---	---------------------------------



		(IAF) NICQE 		(IAF) CRANY 	
9500 	WODNI 	tr 360°	EDDAR 	VGSI and RNAV glidepath not coincident (VGSI Angle 3.00/TCH 36).	
				ZABIG 7000	YACSE 7900
*LNAV only		*0.7 NM to RW31		314°	7000
					GP 3.00° TCH 53
CATEGORY	A	B	C	D	
LPV DA	5346-1 250 (300-1)				
LNAV/ VNAV DA	5346-1 250 (300-1)				
LNAV MDA	5380-1 284 (300-1)				
 CIRCLING	5500-1 404 (500-1)	5560-1 464 (500-1)	5560-1½ 464 (500-1½)	5660-2 564 (600-2)	