

WAAS  
CH **70644**  
**W23A**

APP CRS  
**234°**

Rwy Idg  
TDZE  
Apt Elev

**4001**  
**3652**  
**3658**

**RNAV (GPS) RWY 23**

RENNER FLD/GOODLAND MUNI (GLD)

RNP APCH - GPS.

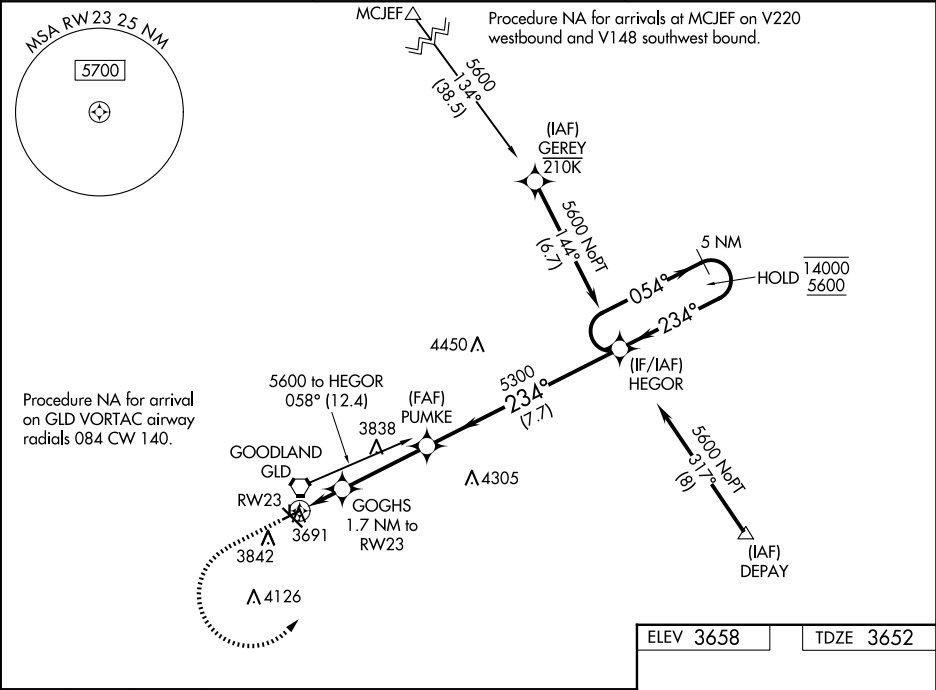
▼

⚠

Circling NA to Rwy 17 and 35. Circling NA south of Rwy 5 and 30.  
For uncompensated Baro-VNAV systems, LNAV/VNAV NA below -21°C or above 54°C. Circling Rwy 5 NA at night.

MISSED APPROACH: Climb to 4200 then climbing left turn to 5600 direct HEGOR and hold.

ASOS <b>121.025</b>	DENVER CENTER <b>132.7 226.675</b>	UNICOM <b>122.8 (CTAF) 0</b>
------------------------	---------------------------------------	---------------------------------



<div><div>4200</div><div>5600</div><div>HEGOR</div></div>				
<div><div><div>RW23</div><div>1.1 NM to RW23</div></div><div><div>GOGHGS</div><div>1.7 NM to RW23</div></div><div><div>PUMKE</div><div>5300</div></div><div><div>HEGOR</div><div>5 NM Holding Pattern</div></div></div>				
<div><div>1.1 NM</div><div>0.6 NM</div><div>3.4 NM</div><div>7.7 NM</div></div>				
CATEGORY	A	B	C	D
LPV DA	3902-1		250 (300-1)	NA
LNAV/VNAV DA	3939-1		287 (300-1)	NA
LNAV MDA	4040-1		388 (400-1)	NA
CIRCLING	4080-1	4120-1	4120-1½	NA
	422 (500-1)	462 (500-1)	462 (500-1½)	

