

TAYTR ONE ARRIVAL (RNAV)

AL-683 (FAA)

PROVO, UTAH

SW-4, 10 JUL 2025 to 07 AUG 2025

ARRIVAL ROUTE DESCRIPTION

FRNZY TRANSITION (FRNZY.TAYTR1)

JAMMN TRANSITION (JAMMN.TAYTR1)

KNOLE TRANSITION (KNOLE.TAYTR1)

NEEBO TRANSITION (NEEBO.TAYTR1)

SPANNE TRANSITION (SPANNE.TAYTR1)

YMONT TRANSITION (YMONT.TAYTR1)

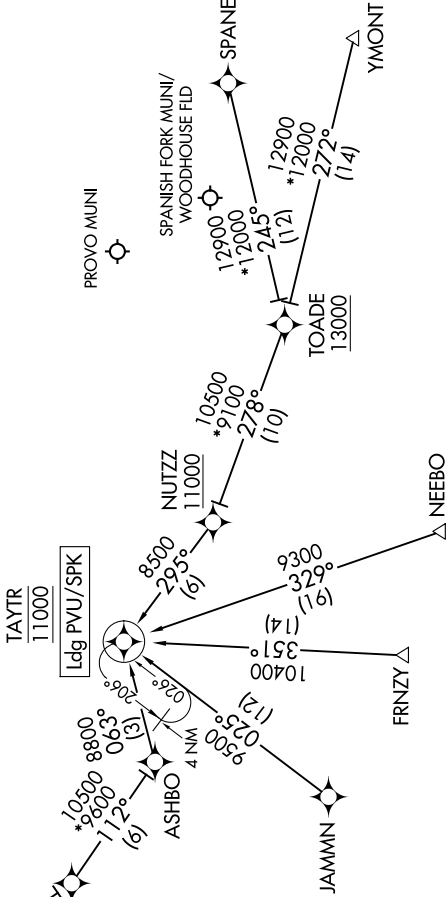
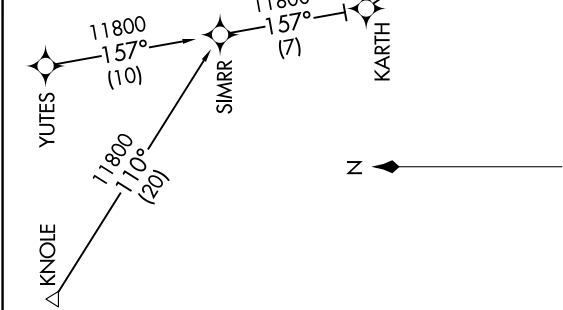
YUTES TRANSITION (YUTES.TAYTR1)

LANDING PVD: From TAYTR, expect ILS or LOC RWY 13 or RNAV (GPS) RWY 13 approach.

LANDING SPK: From TAYTR, expect RNAV (GPS) Y RWY 12 or RNAV (GPS) Z RWY 12 approach.

SALT LAKE CITY APP CON
118.85 233.7
PVU ATIS
135.175

RNAV 1 - GPS.
RADAR required.



NOTE: GPS required.
NOTE: FRNZY Transition, ATC assigned only.
NOTE: Chart not to scale.

TAYTR ONE ARRIVAL (RNAV)

PROVO, UTAH

SW-4, 10 JUL 2025 to 07 AUG 2025